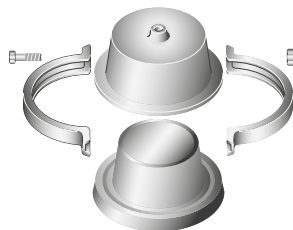
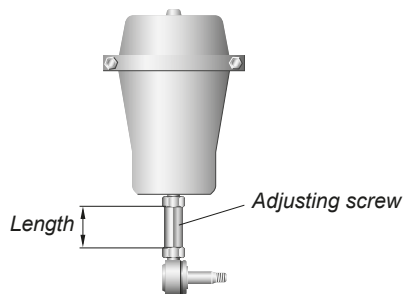


Spare parts Onspot 03, 04

If the cylinder housing is damaged, the entire cylinder must be replaced with a completely new cylinder.

All Onspots now use the short cylinder variant. Older long cylinders can easily be replaced with short cylinders. The length of the adjusting screw identifies the type of cylinder you have (see diagram).

There are three different lengths of adjusting screw; measure the adjustment screw and use the table to find which cylinder you have.



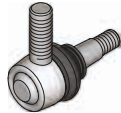
Membrane kit

Length (mm)	Complete cylinder
55	56-254603
115	56-254601
165	56-254602

Membrane kit 56-231100

- 1 x Membrane
- 1 x Cover
- 2 x lamps
- 2 x Screws
- 2 x Nuts

Angular toggle joint 56-251700



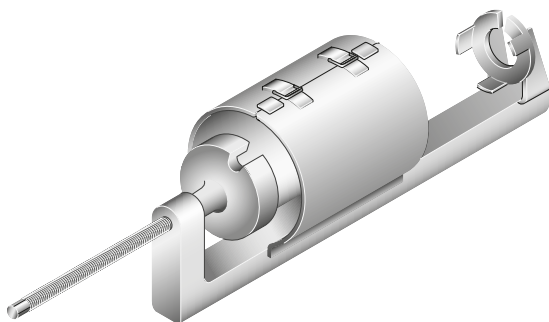
Angular toggle joint

Cylinder disassembly tool 56-207100

Great care should be taken whenever you do work on or replace parts in the cylinder.

Air cylinders have substantial inherent spring power.

Therefore you should always use the cylinder disassembly tool when undertaking these procedures.

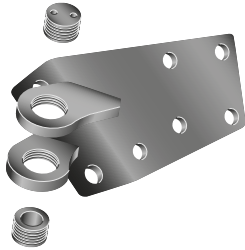


Cylinder disassembly tool

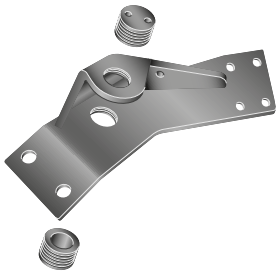
Cylinder brackets

Spare parts Onspot 03, 04

Cylinder brackets with bearing cups



Cylinder bracket, left 56-188600
Cylinder bracket, right 56-188500



Cylinder bracket, left 56-063712
Cylinder bracket, right 56-063711

Spare parts Onspot 03, 04

Arms with bearing cups

Onspot can be fitted in two ways – in front of, or behind, the drive shaft. Identify which type of fitting you have by looking at figs. 1 and 2. The captions explain which arm type is used for each fitting.

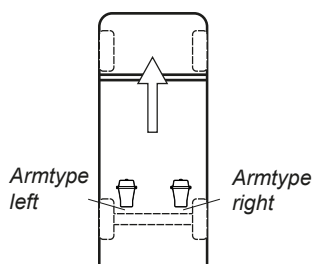


Fig. 1, forward mounting

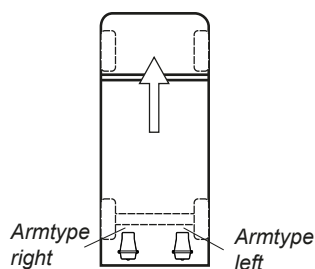
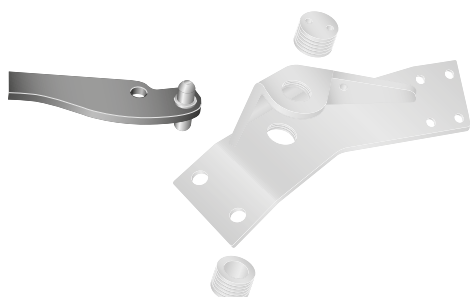


Fig. 2, rear mounting



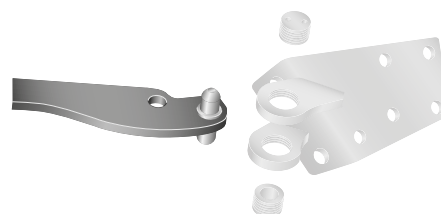
Arm type left 56-155002
 Arm type right 56-155001

Arm type left 56-155010
 Arm type right 56-155009

Arm type left 56-155008
 Arm type right 56-155007

Arm type left 56-165202
 Arm type right 56-165201

Arm type left 56-203100
 Arm type right 56-203000

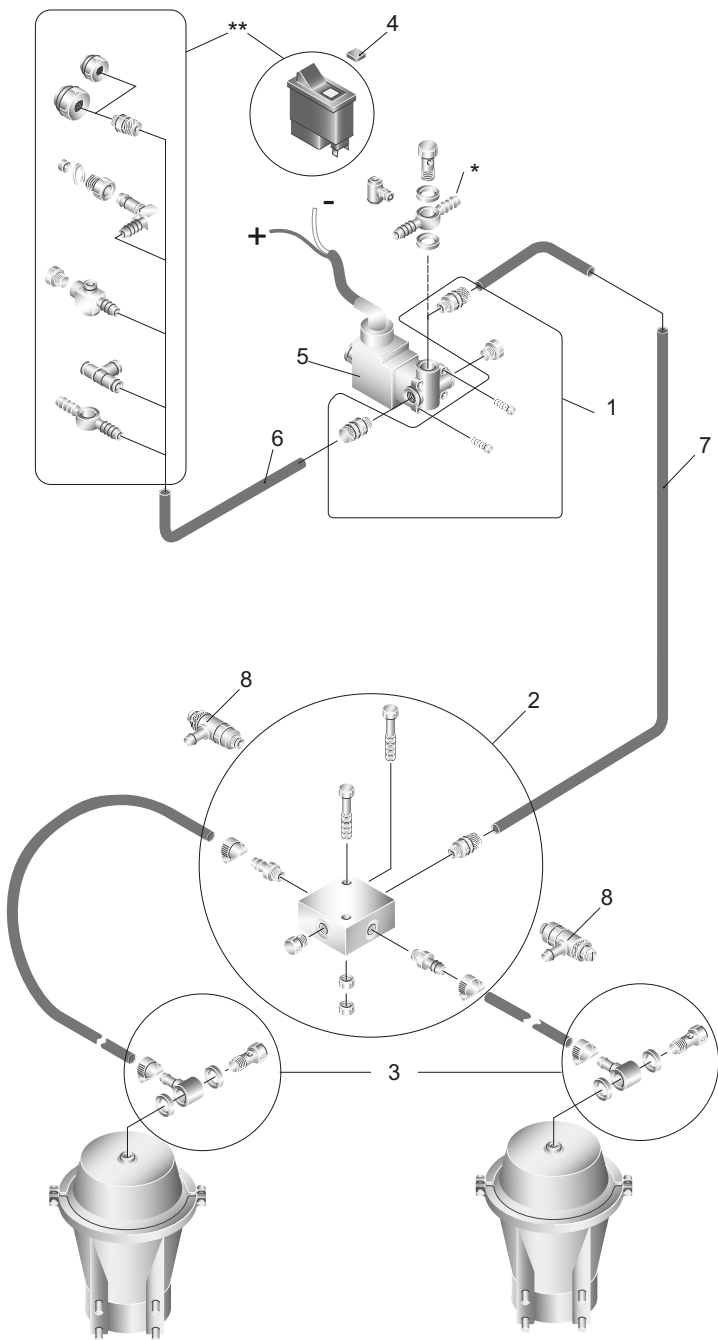


Arm type left 56-188800
 Arm type right 56-188700



56-191300 Bearing cups
 2 x Bearing cups
 1 x Grease
 1 x Locking compound

Spare parts Onspot 03, 04



1 56-227900 Valve nipple kit, incl.:
 2 x Insertion nipples
 2 x Screws
 1 x Plug

2 56-208600 Distribution block repair kit incl.:
 1 x Distribution block
 1 x Plug
 2 x Hose nipple
 1 x Insertion nipple
 2 x Hose clamps
 2 x Bolts M6x35
 2 x Nuts M6

3 56-228000 Cylinder nipple kit, incl.:
 2 x Hole bolts
 2 x Banjo nipples
 4 x Grommets
 2 x Hose clamps

4 37-130200 Mercedes Symbol plate
 37-131500 DAF, Iveco,
 MAN L2000, Volvo B10,
 Universal Symbol plates

37-132300 Volvo, Symbol plate
 5 29-020000 MAN solenoid valve
 29-019900 MAN connection cable
 29-021900 Solenoid valve incl. cable
 head, other vehicle models

6 Plastic pipe 8x1 L= 6m

7 Rubber hose Ø 8mm
 L= 4m, min 15 Bar

* On some models. See the mounting instructions for each vehicle bracket.

** The installation of circuit breakers and connection to the air system are services provided by vehicle dealers.