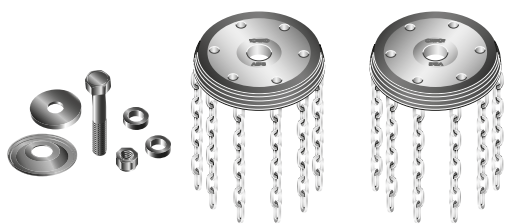
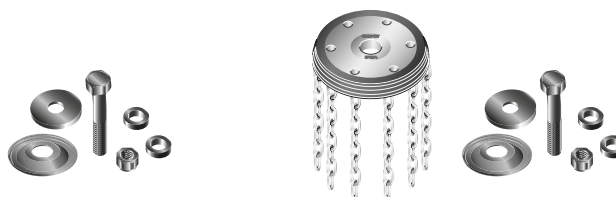


Spare parts Onspot



Wheel kit, incl. wheel bearings

- 56-236501 6-chains, Wheel 190
- 56-236503 6-chains, Wheel 170
- 56-236504 6-chains sparkle resistant, Wheel 190
- 56-236507 6-chains sparkle resistant, Wheel 170
- 56-236505 12-chains, Wheel 190
- 56-236506 12-chains, Wheel 170
- 56-236510 12-chains, long, Wheel 190
- 56-236508 18-chains, Wheel 190
- 56-236509 18-chains, Wheel 170



Wheel, incl. wheel bearings

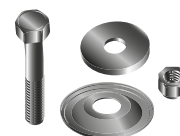
- 56-236300 6-chains, Wheel 190
- 56-236400 6-chains, Wheel 170
- 56-236311 6-chains sparkle resistant, Wheel 190
- 56-236411 6-chains sparkle resistant, Wheel 170
- 56-236312 12-chains, Wheel 190
- 56-236412 12-chains, Wheel 170
- 56-236313 12-chains, long, Wheel 190
- 56-236318 18-chains, Wheel 190
- 56-236418 18-chains, Wheel 170



- 56-241300 Wheel mounting kit adjustable 120 mm, standard
- 1 x Wheel bolt
 - 4 x Spacers
 - 1 x Angle spacer
 - 1 x Nut
 - 1 x Cover plate



- 56-206000 Wheel mounting kit adjustable 100 mm, standard
- 1 x Wheel bolt
 - 2 x Spacers
 - 1 x Angle spacer
 - 1 x Nut
 - 1 x Cover plate



- 56-206700 Wheel mounting kit adjustable 80 mm, for low profiles
- 1 x Wheel bolt
 - 1 x Angle spacer
 - 1 x Nut
 - 1 x Cover plate



- 56-241100 Kickback guard kit



- 37-108500 Wheel bearing kit for older type of wheel
- 2 x Bearings
 - 1 x Retaining ring
 - 1 x Seal, upper
 - 1 x Seal, lower



- 56-237300 Wheel bearing kit
- 2 x Bearings
 - 1 x Retaining ring



- Wheel disc
- 56-246401 Wheel 190
 - 56-246402 Wheel 170



Chain plate

- 56-246601 Chain plate, 6-chains, Wheel 190
- 56-246602 Chain plate, 6-chains, Wheel 170
- 56-246603 Chain plate, 6-chains sparkle resistant, Wheel 190
- 56-246604 Chain plate, 6-chains sparkle resistant, Wheel 170
- 56-246605 Chain plate, 12-chains, Wheel 190
- 56-246606 Chain plate, 12-chains, Wheel 170
- 56-246607 Chain plate, 12-chains long, Wheel 190
- 56-246608 Chain plate, 18-chains, Wheel 190
- 56-246609 Chain plate, 18-chains, Wheel 170



- 56-246500 Bolt kit Onspot wheel