

# PKK 12500

*Advantage*

**PALFINGER**



## THE IDEAL AID WITH THE ADVANTAGEOUS PRICE-PERFORMANCE RATIO

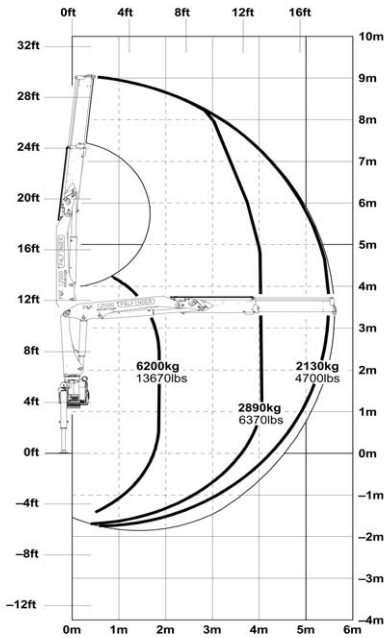
The new PKK 12500 from the *Advantage* Class combines the advantages of a genuine PALFINGER crane with an exceptional price-performance ratio. Compact in design and construction, this crane has a low dead weight but achieves an enormous lifting capacity. What's more, its short parking length and narrow installation width guarantee space-saving mounting on any commercial truck chassis.

With the PKK 12500 *Advantage* you will have a crane at your disposal which optimally handles simple applications in construction site duty and building materials transportation!

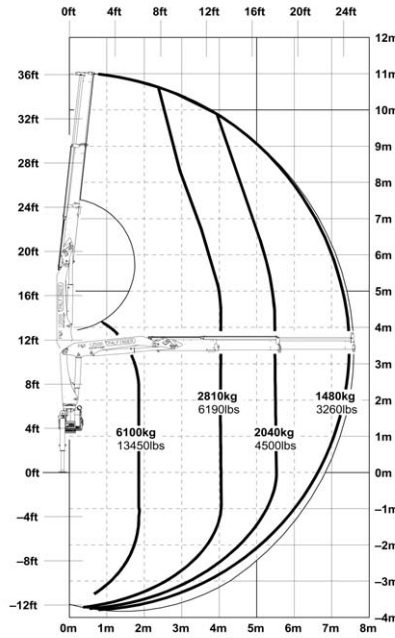




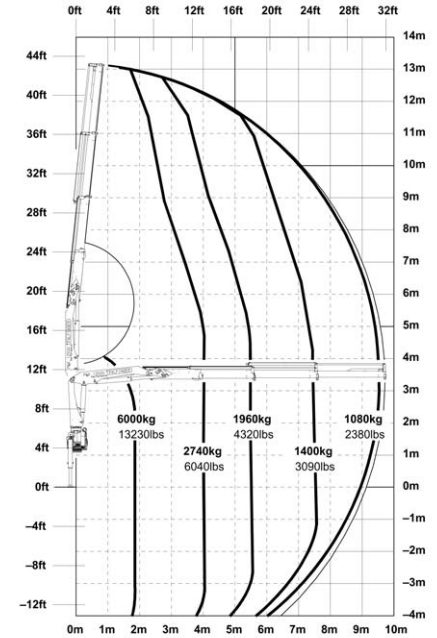
**PKK 12500 Advantage**



**PKK 12500 Advantage A**

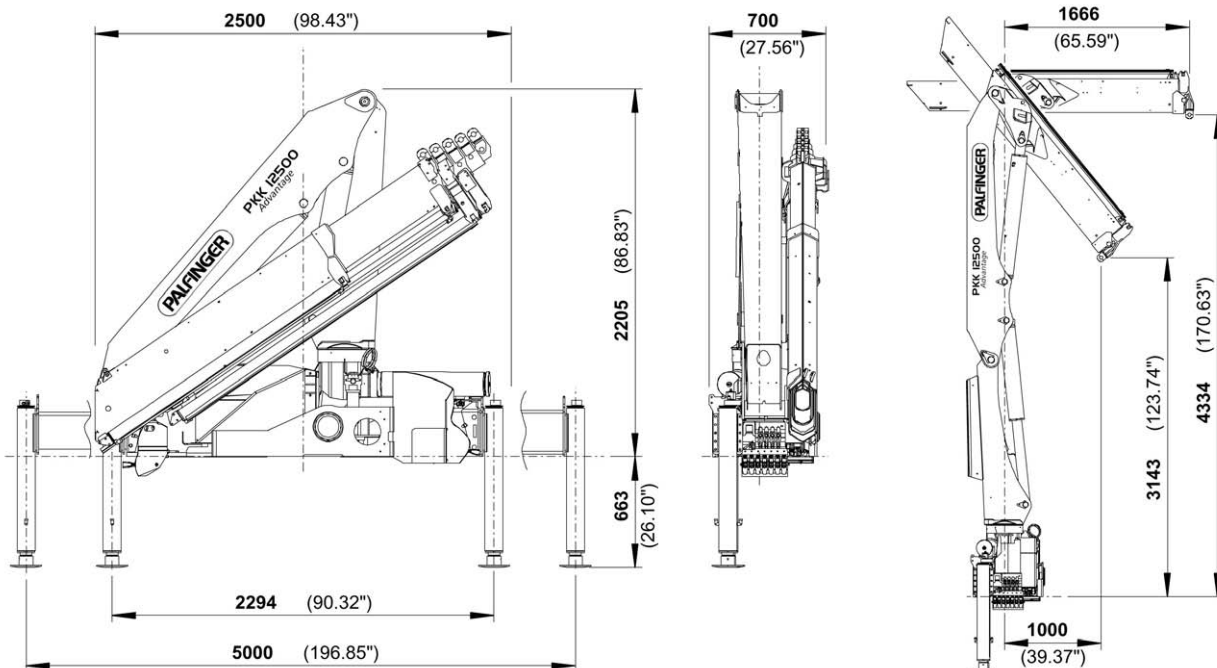


**PKK 12500 Advantage B**



PKK 12500 Advantage		
Technical Specifications (EN 12999)		
Max. lifting moment	11.7 mt/115.0 kNm	84790 ft.lbs
Max. lifting capacity	6200 kg/60.8 kN	13670 lbs
Max. hydraulic outreach	9.7 m	31' 10"
Slewing angle	420°	

PKK 12500 Advantage		
Standard crane		
Slewing torque	1.4 mt/14.0 kNm	10320 ft.lbs
Outreach	5.6 m	18' 4"
Stabilizer spread	5.0 m	16' 5"
Fitting space required	0.70 m	2' 4"
Width folded	2.5 m	8' 2"
Max. operating pressure	300 bar	4350 psi
Recommended pump capacity	from 35 l/min 7.7 imp.gal./min 9.2 US gal./min	
	to 50 l/min 11.0 imp.gal./min 13.2 US gal./min	
with RC- control and LS-system	from 50 l/min 11.0 imp.gal./min 13.2 US gal./min	
	to 70 l/min 15.4 imp.gal./min 18.5 US gal./min	
Dead weight standard crane	1357 kg	2990 lbs



Applications shown in the leaflet do not always correspond to the standard specifications. Country-specific regulations must be considered for the crane installation. Design and specification are subject to change without prior notice.