

## Van lift DH-P2.05

350 - 750 Kg



**DHOLLANDIA**





Installation at the rear doors



Installation at the side doors

## Standard 500 kg internally mounted twin-arms lift

The DH-P2 is a fully automatic twin-arms lift, suitable for mounting **inside the cargo space** of the vehicle. It can be mounted at the rear doors or at the side doors of a wide range of factory built panel vans and box vans.

In comparison to the 1-arm model DH-P1, the reinforced construction with 2 lift arms provides additional lift capacity and maximum platform stability. It increases the stability of the load on the platform and the safety of the operators.

The platform is **flat**, so that goods such as roll-cages, white & brown goods, small machinery ..., can be loaded with minimal effort.

- + 2 reinforced lift arms for maximum platform stability
- + Minimal platform angle. Flat, shallow platform for easy, comfortable access.
- + Mounted inside the vehicle body. No constraints with regards to available mounting space and ground clearance under the vehicle.
- + Excellent price-quality ratio.
- + Electrical controls without sensitive electronic components





Automatic roll-stop at the outboard platform edge



750 kg execution: platform reinforced by steel cable suspension



12V or 24V DC pump unit premounted at the side of the lift frame

## CHARACTERISTICS

DH-P2.05

### PLATFORM

- Flat platform with aluminium work surface
- Automatic roll-stop at the outboard platform edge
- Automatic bridge plate + toe-guard + load restraint at the inboard platform edge
- Mechanical platform lock, holding the platform in its travel position in case of accidental pressure loss
- Raised side profiles as roll-off protection on the L+R sides of the platform

### FUNCTIONAL & MECHANICAL CHARACTERISTICS

- 2 reinforced lift arms for maximum platform stability
- 750 kg execution: platform reinforced by steel cable suspension
- Flat platform, level ride

### HYDRAULICAL CHARACTERISTICS

- 2 lift cylinders for maximum platform stability
- 12V or 24V DC pump unit premounted at the side of the lift frame

### ELECTRICAL CHARACTERISTICS

- 2-button wander lead with spiral cable [OAE001]
- Main battery isolator switch premounted on the pump unit [OAE038]

### FINISH & MAINTENANCE

- Low-maintenance bearings in all articulation points
- Intensive dampening of mechanical driving noises
- Lift frame in Protection PLUS finish (zinc phosphate + KTL epoxy primer + polyester powder top coat)

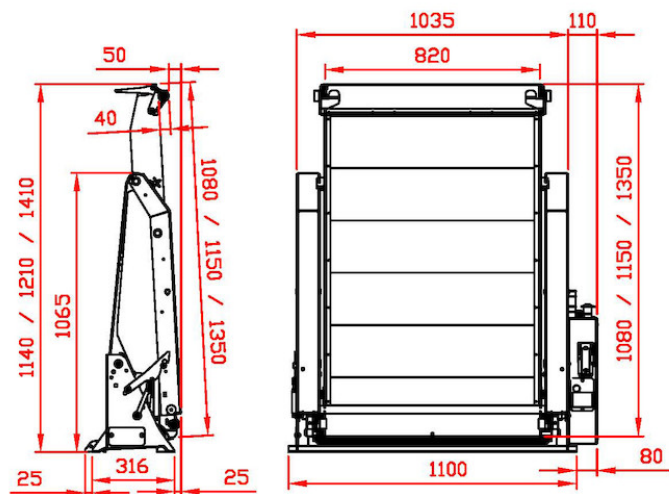
Disclaimer: data and images of lifts and options are indicative, and may vary in function of the lift execution and vehicle details. Ask confirmation from DHOLLANDIA.



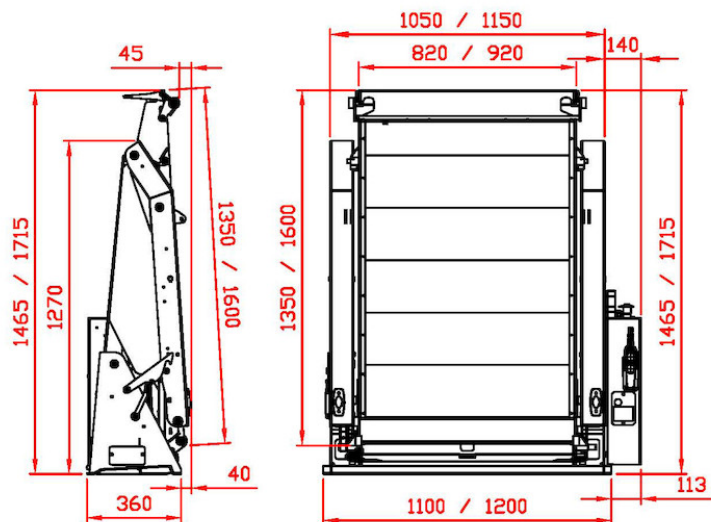
**DH-P2.07 750 kg execution.** Available with platform depths of 1350 - 1600 mm, and a longer lift arm 800 mm for a max. lifting height of 1150 mm.



## DH-P2.04



## DH-P2.07



### TECHNICAL CHARACTERISTICS

DH-P2.05

<b>Lift frame</b>	2 lift arms
<b>Cylinders</b>	2 lift cylinders
<b>Type of ride</b>	Flat platform, level ride
<b>Material</b>	Steel frame + aluminium profiles
<b>Platform details</b>	<ul style="list-style-type: none"> <li>- Automatic roll-stop at the inboard platform edge</li> <li>- Automatic bridge plate and toe-guard at the outboard platform edge</li> </ul>
<b>Standard platform depths</b>	<ul style="list-style-type: none"> <li>- 1080 - 1150 - 1350 mm standard</li> <li>- 1150 - 1350 mm for OWU002</li> <li>- 1350 mm for OWU003</li> <li>- Other depths on request [OWP002.L]</li> </ul>
<b>Standard platform widths</b>	820 mm standard / 920 mm optional [OWP002.W]
<b>Standard control unit</b>	OAE001
<b>Standard finish of the lift frame</b>	Protection PLUS [OAT102]

### MOUNTING DIMENSIONS

DH-P2.05

<b>Iarm</b>	<b>700 [P2.04]</b>	<b>800 [P2.07]</b>
<b>K max.</b>	900	1150

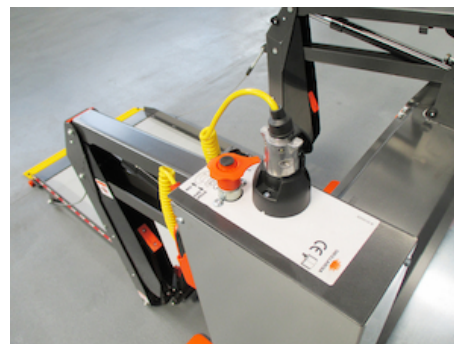




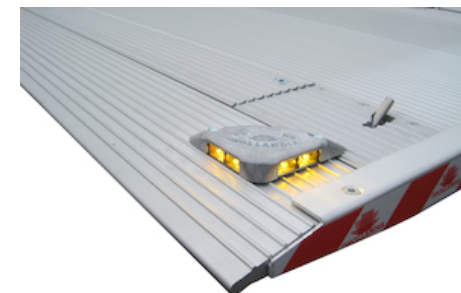
OWE002 - 3-button wander lead + limit switch on lift movement



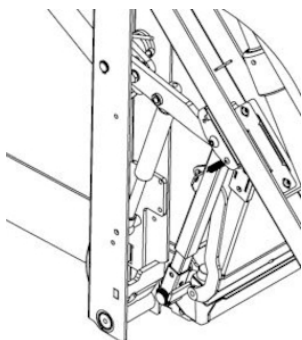
OWE003 - 4-button wander lead + limit switches



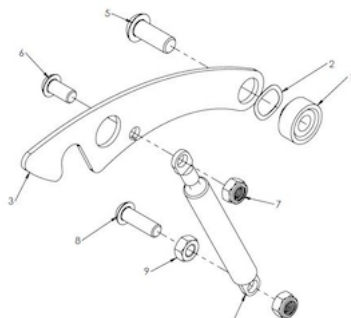
OWE004 - Plug connection for wander lead on pump unit



OAE200 - Flashing platform lights



OWF010 - Blocking of bridge plate while lifting on DH-PH2



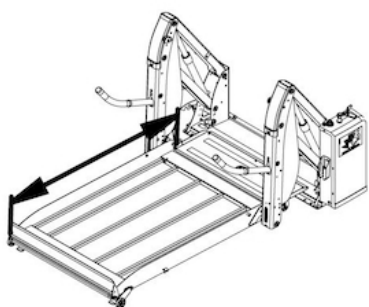
OWF014.1 - Lock with air cylinder on PH2/P2



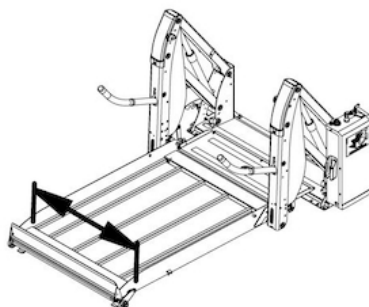
OWF014.2 - Double lock L+R with air cylinder on PH2/P2



OWF015 - Lock PH2 with spring instead of gas pump



OWP002.L - Non-standard platform depth on DH-P



OWP002.W - Non-standard platform width on DH-P



OWP001 - Bridge plate mounted on inboard platform edge

OWP101 - Mechanical roll-stop at the outboard platform edge



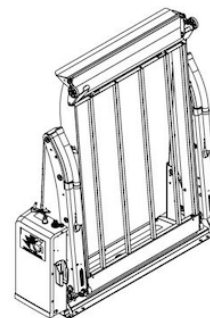




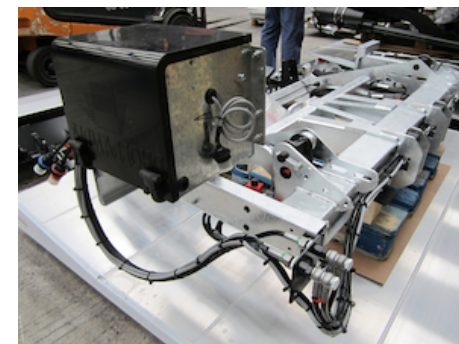
OWU002 - Vertically folding split platform DH-PH2/P2 type2



OWU003 - Horizontally folding platform DH-PH2/P2



OWH002.L - Power pack left DH-P2, PH2



OAH033 - Power pack supplied loose - connection right side



OWH001 - Flow regulator open / close on DH-PH2/P2



OAT020 - Reflecting platform flags type TÜV



OAT023 - Reflecting platform flags type Export Red



OWF011 - Frame of DH-PH2 tilted over 3°