

Modern 2-cylinder lift DH-LE.08

500 - 750 Kg



DHOLLANDIA





Light-weight aluminium platform with anti-slip surface



The lift frame without cross tube enables to keep the spare wheel in its original position in most cases

Modern 2-cylinder lift for very short overhang

The new DH-LE is a **light-weight 2-cylinder lift**, at the entry level of DHOLLANDIA's range of cantilever lifts. Thanks to its compact lift frame and short lift arms, it ideally suits light commercial vehicles with **very short overhang**.

The ingenious lift frame construction without cross tube allows to **save weight** and (in most cases) to **leave the spare wheel in its original position**.

The DH-LE is available with conventional mounting plates to suit regular chassis, or with brand-specific quick-fit mounting plates (depending on chassis type, wheel base and overhang). The DH-LE.08 cannot be used in combination with a towing hitch (use DH-LMA.08).

- + Modern and robust 2-cylinder tail lift with reduced proper weight. Compact lift frame and short lift arms enabling installation in very short mounting space.
- + Lift frame without cross tube. Saves weight, and leaves the spare wheel in its original position (in most cases).
- + Wedged platform. Level ride with automatic tilt at ground level. Adjustable platform orientation.
- + Excellent price-quality ratio.
- + Very versatile lift available with a large choice of value-adding options and extra equipment.

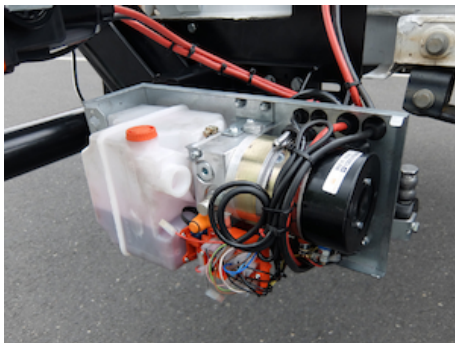




Aluminium platform with profiles oriented in longitudinal direction [type V...], and a cross milled anti-slip protection pattern



Manual emergency operation on all electrovalves



Pump unit 12V or 24V DC, accessible on 4 sides for easy maintenance

PLATFORM

- Light-weight aluminium platform with anti-slip surface
- Aluminium platform with profiles oriented in longitudinal direction [type V...], and a cross milled anti-slip protection pattern
- Synthetic rollers for the contact between the platform and the ground

FUNCTIONAL & MECHANICAL CHARACTERISTICS

- Conical / wedge platform. Level ride with automatic tilt at ground level
- Platform tilt adjustable at any position from the exterior controls
- Frame composed of 2 separate consoles, without structural cross beam
- The RUP (rear underrun protection) forms a torsion tube, and effectuates the synchronisation between the 2 lift arms
- Intelligent design offering maximum weight saving

HYDRAULICAL CHARACTERISTICS

- 1 lift cylinder and 1 tilt cylinder with spring assisted platform opening
- Electrical safety valves on all cylinders
- Manual emergency operation on all electrovalves
- Cylinder piston rods in hard-chromed stainless steel
- Cylinders equipped with rubber gaitors and lubrication
- Compact pump unit 12V or 24V DC, mostly premounted on the lift frame

ELECTRICAL CHARACTERISTICS

- Exterior control box with main battery disconnect switch and removable key [OAE030.BT.0] or double toggle-switch control without disconnect switch [OAE048.0]
- Electrical controls without sensitive electronic components
- Safe exterior controls with compulsory 2-hand operation
- Electric motor with thermal cut-out fuse

LIFT FRAME

- Round bumper tube mounted to the lift arms [OAF130]

FITTING

- Compact lift frame and short lift arms for fitting in a short mounting space
- Premounted mounting plates at a fixed center distance [OAM011]
- Also available with quick-fit mounting plates adapted to the vehicle brand, the wheelbase and overhang [option OAM014]

FINISH & MAINTENANCE

- Low-maintenance bearings in all articulation points, plus grease nipples
- Lift frame in Protection PLUS finish (zinc phosphate + KTL epoxy primer + polyester powder top coat)

All platform or platform sections in natural finish in function of the lift execution and vehicle details. Ask confirmation from DHOLLANDIA.



TECHNICAL CHARACTERISTICS

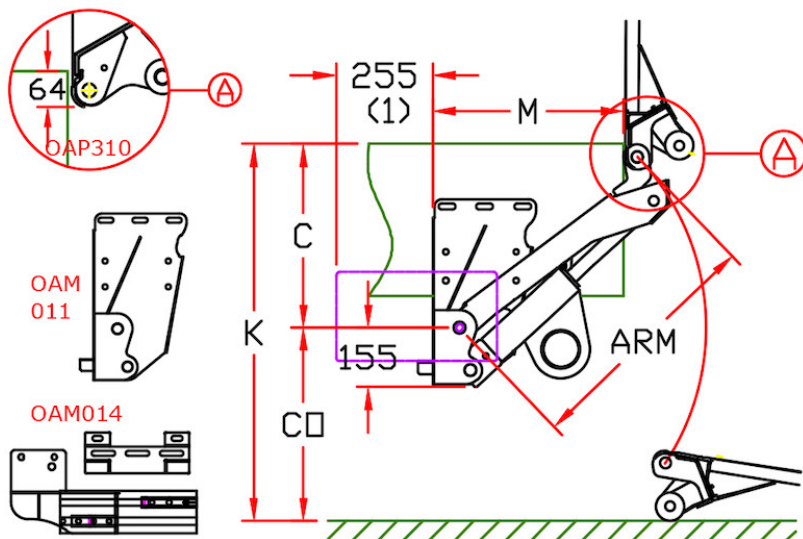
DH-LE.08

Lift frame	Compact lift frame without cross beam
Cylinders	1 lift cylinder + 1 tilt cylinder + 1 memory cylinder
Type of ride	Wedged platform. Level ride + automatic tilt at ground level
Platform material	Light-weight aluminium
Platform overlap under floor	-66 mm
Standard platform depths	1250 - 1450 - 1600 mm (max. 1800 mm)
Standard platform widths	Variable up to 2550 mm in steps of 5 mm
Lift arm lengths	590 mm
Lift arm widths	- 894 - 944 - 1054 - 1171 - 1248 - 1336 mm - Adapted to the various brands and types of chassis
Standard control unit	OAE030.BT.P
Standard finish of the lift frame	Protection PLUS [OAT102]

MOUNTING DIMENSIONS

DH-LE.08

larm	570	650
K max.	1030	1180
C max.	480	580
C min.	300	350
CO max.	550	600
M	at C max.	330
M	at C min.	600





OAE001 - 2-button wander lead with spiral cable



OAE030.BT.0 - Exterior joystick control box + main battery isolator switch (+ turn switch)



OAE041.BP.0 - Arctic push-button control box + main battery isolator switch (+ push button)



OAM025 - Adjustable mounting bracket for control box



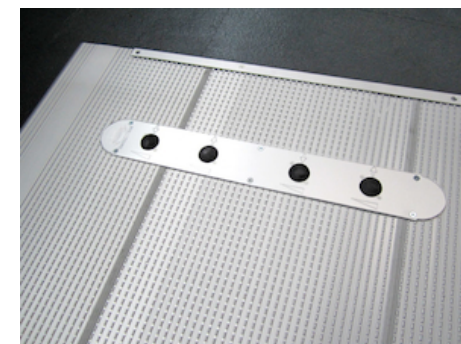
OAE031.Z.0 - 3+1 button exterior control box without main battery isolator switch



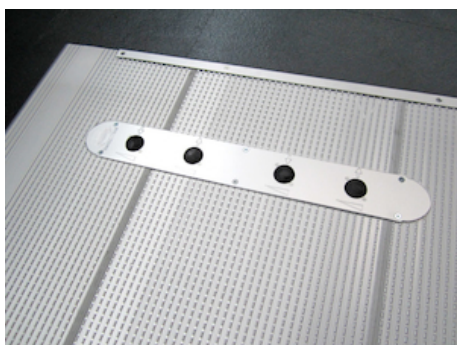
OAM026 - Mounting support type B for OAE031.Z



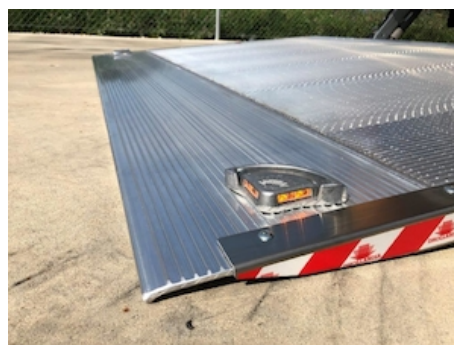
OAE044.1 - Extra slim 3+1 button exterior control box



OAE060 - 4-button foot controls in the platform



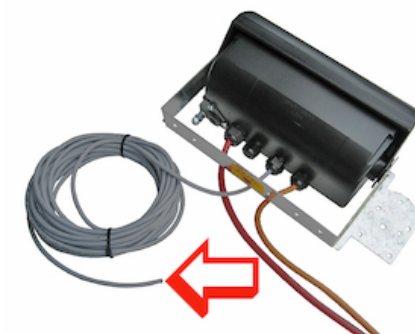
OAE064 - 4-button foot controls + reed sensor in the platform



OAE200.B - Flashing platform lights + protection 12/24V



OAE500 - VEHH plug connection for dashboard switch



OAE501.12 - VEHH wire connection for dashboard switch 12 m



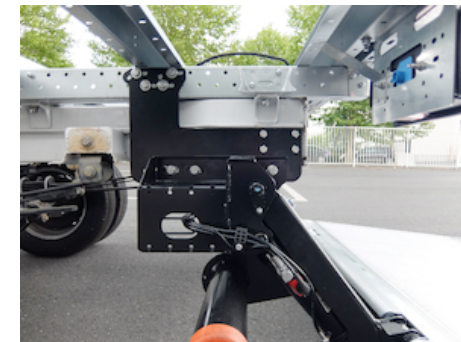
OAE502 - Reed sensor on platform



OAE503.1 - Cabin switch (single use)



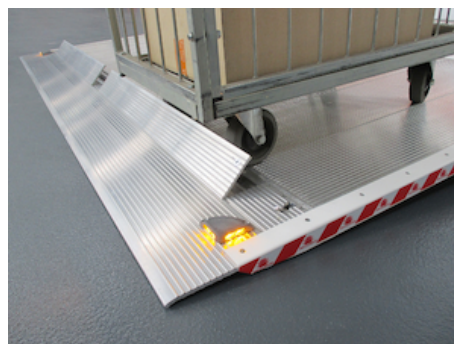
OAE503.2 - Cabin / dashboard switch



OAM014 - Quick-fit mounting plates per type of vehicle



OAP100.M - 2-piece symm. roll-stops in the platform point - MANUAL



OAP100.A - 2-piece symm. roll-stops in the platform point - AUTOMATIC



OAP302.A - Extension of the ALUMINIUM platform per 10 cm



OAP403.1 - Horizontally folding point on DH-L* platform, full width



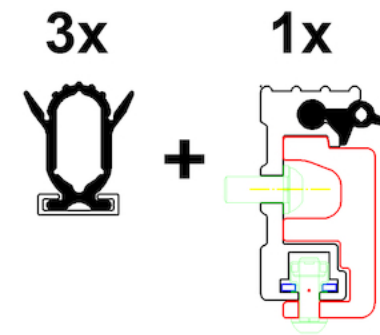
OAP420 - DH-L* platform without lock (on client's request)



OAP421.L - 1 standard lock on L-side of aluminium platform

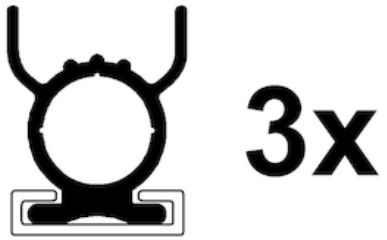


OAP421.R - 1 standard lock on R-side of aluminium platform



OAT001 - Kit rubber platform seals - 4 sides - high





OAT003 - Kit rubber platform seals - 3 sides - low



OAT020 - Reflecting platform flags type TÜV



OAT023 - Reflecting platform flags type Export Red

OAT135.2000 - Anodisation alu platform < 2001 mm



OAU100 - Control box on L side (R steering wheel for UK)

