

# Cantilever lift DH-LM.15

1000 - 1500 Kg



# DHOLLANDIA



## Light-weight transition model between LM.10 and LM.20

The DH-LM.15 was launched in 2012 as missing link between the 1000 and 2000 kg capacity lifts. Since then, it has become extremely popular as **ideal weight saving lift for medium capacity trucks** of 7,5T to 12T GVW.

It is considerably lighter and requires less overhang than the DH-LM.20; yet it is stronger and more robust than the DH-LM.10. It is recommended to use the DH-LM.15 instead of DH-LM.10 / LMQ.10 with 850 mm long lift arms and for 1000 kg lifts with platform depth above 1600 mm.

The mounting plates are bolt-on and fully adjustable in width.



Tail lift for 1000-1500 kg lift capacity with minimal proper weight, offers maximum pay-load on trucks of 7.5-12T GVW.



Very versatile lift available with a large choice of value-adding options and extra equipment.

- + Powerful, stable 4-cylinder tail lift for 1000-1500 kg lift capacity.
- + Reliable weight champion in the 1500 kg class. Offers maximum pay-load on medium-duty trucks of 7.5-12T GVW.
- + Wedged platform. Level ride with automatic tilt at ground level. Adjustable platform orientation.
- + Very versatile lift available with a large choice of value-adding options and extra equipment.
- + Lift frame in hot-dip zinc plated or "galvanised" finish. Best possible protection against corrosion [OAT104].

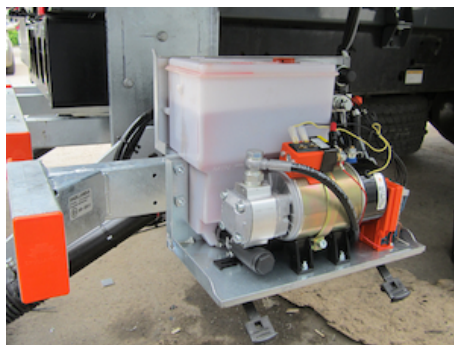




Manual emergency operation on all electrovalves



Control unit integrated in cover of pump unit, with main battery isolator switch and removable key [OAE039.BP]



Pump unit 12V or 24V DC, accessible on 4 sides for easy maintenance

**PLATFORM**

- **Light-weight aluminium** platform, or **heavy-duty steel** platform
- Aluminium platform with profiles oriented in longitudinal direction [type V...], and a cross milled anti-slip protection pattern
- Synthetic rollers for the contact between the platform and the ground

**FUNCTIONAL & MECHANICAL CHARACTERISTICS**

- Intelligent design offering maximum weight saving
- Conical / wedge platform. Level ride with automatic tilt at ground level
- Platform tilt adjustable at any position from the exterior controls

**HYDRAULICAL CHARACTERISTICS**

- 2 lift cylinders for maximum platform stability
- 2 tilt cylinders with spring assisted platform opening
- Electrical safety valves on all cylinders
- Manual emergency operation on all electrovalves
- Cylinder piston rods in hard-chromed stainless steel
- Cylinders equipped with rubber gaitors and lubrication
- Pump unit 12V or 24V DC, accessible on 5 sides for easy maintenance

**ELECTRICAL CHARACTERISTICS**

- Control unit integrated in cover of pump unit, with main battery isolator switch and removable key [OAE030.BT.P.0]; or compact control unit with 2 toggle-switches (without battery switch) [OAE048.0]
- Electrical controls without sensitive electronic components
- Safe exterior controls with compulsory 2-hand operation
- Electric motor with thermal cut-out fuse

**FITTING**

- Bolt-on mounting plates for quick and easy fitting [OAM010]
- Fixed 3-piece bumper bar available as option [OAF100.ST]

**FINISH & MAINTENANCE**

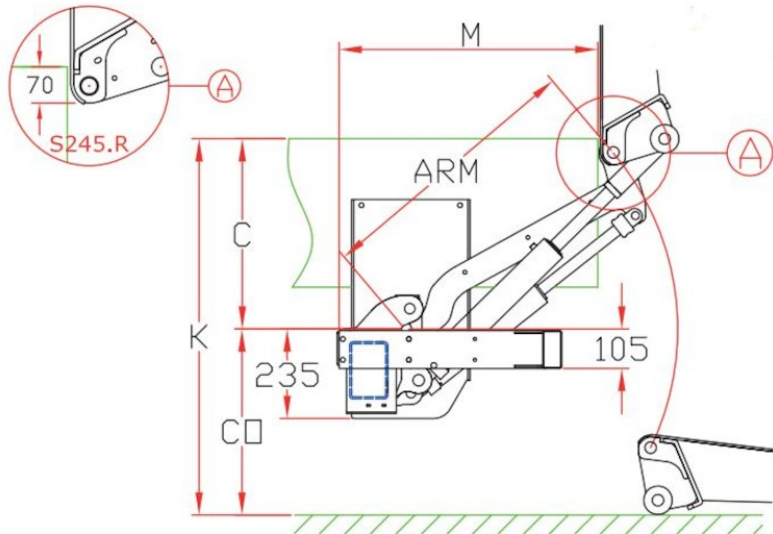
- Low-maintenance bearings in all articulation points, plus grease nipples
- Lift frame in hot-dip zinc plated or "galvanised" finish. Best possible protection against corrosion [OAT104].
- Alu platform or platform sections in natural finish
- Steel platforms to 2000 mm shotblasted and KTL epoxy primed, or in zinc primer at the discretion of DHOLLANDIA. Steel platforms > 2000 mm in zinc primer.

Disclaimer: data and images of lifts and options are indicative, and may vary in function of the lift execution and vehicle details. Ask confirmation from DHOLLANDIA.



**TECHNICAL CHARACTERISTICS**
**DH-LM.15**

<b>Lift frame</b>	100 x 150 mm
<b>Cylinders</b>	2 lift cylinders + 2 tilt cylinders
<b>Type of ride</b>	Wedged platform. Level ride + automatic tilt at ground level
<b>Platform material</b>	Aluminium or steel
<b>Platform overlap under floor</b>	-70 mm
<b>Standard platform depths</b>	- Steel: 1500 - 1750 mm (max. 2000 mm) - Alu: 1600 - 1800 mm (max. 2000 mm)
<b>Standard platform widths</b>	- Steel: 2350 - 2480 - 2500 - 2520 - 2550 mm - Alu: Variable up to 2550 mm in steps of 5 mm
<b>Lift arm lengths</b>	720 - 800 - 880 mm
<b>Lift arm widths</b>	1200 mm
<b>Standard control unit</b>	OAE030.BT.P
<b>Standard finish of the lift frame</b>	Hot-dip zinc plated finish [OAT104]


**MOUNTING DIMENSIONS**
**DH-LM.15**

larm	720	800	880	960 (1)
<b>K max.</b>	1190	1295	1400	1460
<b>C max.</b>	605	665	720	750
<b>C min.</b>	300	350	400	450
<b>CO max.</b>	585	630	680	710
<b>M</b> at C max.	590	650	705	790
<b>M</b> at C min.	820	885	950	1020

(1) ARM 960 mm only available on special request.





OAE001 - 2-button wander lead with spiral cable



OAE030.BT.P.0 - Controls with joy-stick and battery switch in pump unit



OAE041.BP.P.0 - Arctic controls with battery switch in pump unit



OAE030.BT.1 - Controls + battery switch + turn switch



OAE041.BP.1 - Arctic controls + E2012 + push button



OAM025 - Adjustable mounting bracket for control box



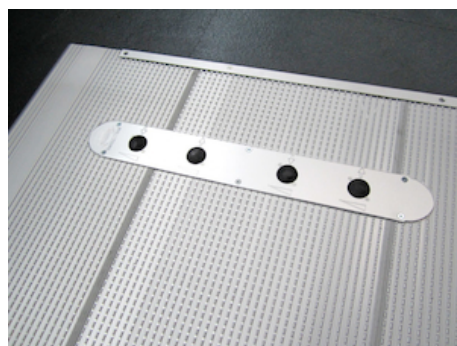
OAE031.Z.0 - 3+1 button exterior control box without main battery isolator switch



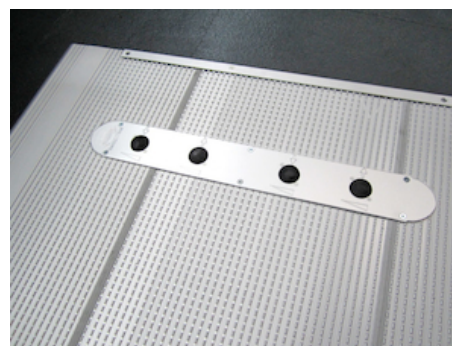
OAM026 - Mounting support type B for OAE031.Z



OAE048.0 - Control unit with 2 toggle-switches



OAE060 - 4-button foot controls in the platform



OAE064 - 4-button foot controls + reed sensor in the platform

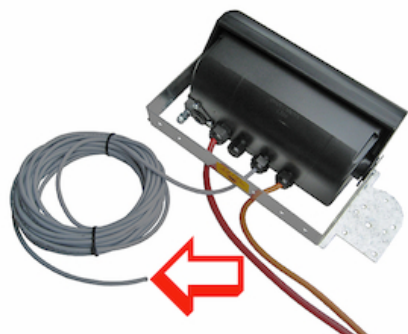


OAE200.B - Flashing platform lights + protection 12/24V





OAE500 - VEHH plug connection for dashboard switch



OAE501.12 - VEHH wire connection for dashboard switch 12 m



OAE502 - Reed sensor on platform



OAE503.1 - Cabin switch (single use)



OAE503.2 - Cabin / dashboard switch



OAF001 - Lift arm type LMK for trailer coupling



OAF100.ST - Fixed 3-piece bumper in steel, mounted to the lift frame



OAF103 - Suppl. for preparation of the bumper bar for towing hitch



OAH013.60.LE - Hydr. stabilising leg straight 4T LE ... mm



OAM006 - End stop for lift arm against underside of loading floor



OAP100.M - 2-piece symm. roll-stops in the platform point - MANUAL



OAP100.A - 2-piece symm. roll-stops in the platform point - AUTOMATIC





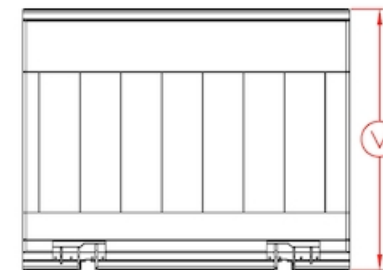
OAP018.01 - Platform of DH-L\* in wind-permeable meshed steel



OAP021 - 1 standard size side ramp (type A) for OAP020



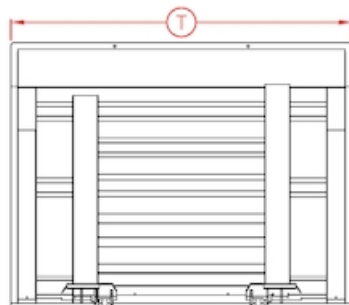
OAP202.LR - 2 hinged safety rails on L+R side of platform



OAP302.A - Extension of the ALUMINIUM platform per 10 cm



OAP302.S - Extension of the STEEL platform per 10 cm



OAP303 - Non-standard platform width

OAP323 - Steel platform with vertical beam structure



OAP403.1 - Horizontally folding point on DH-L\* platform, full width



OAP420 - DH-L\* platform without lock (on client's request)



OAP421.L - 1 standard lock on L-side of aluminium platform



OAP421.R - 1 standard lock on R-side of aluminium platform

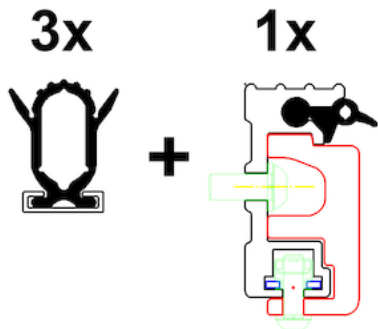


OAP422.L - 1 standard lock on L-side of steel platform





OAP422.R - 1 standard lock on R-side of steel platform



OAT001 - Kit rubber platform seals - 4 sides - high



OAT003 - Kit rubber platform seals - 3 sides - low



OAT020 - Reflecting platform flags type TÜV



OAT023 - Reflecting platform flags type Export Red



OAT124 - Hot-dip zincplated finish for steel DH-L platform



OAT131 - Publicity plate for galva platform, supplied loose



OAT131.PM - Publicity plate for galva platform, premounted

OAT135.2000 - Anodisation alu platform < 2001 mm

OAT135.2800 - Anodisation alu platform > 2000 mm

OAU005 - Execution for very short mounting space DH-LMP / LEP

OAU100 - Control box on L side (R steering wheel for UK)

