

Fold-away lift DH-RC.15

1000 - 1500 Kg



DHOLLANDIA



Medium capacity fold-away lift

The DH-RC.15 is the medium-duty model in the range of fold-away lifts with **level ride** between the vehicle floor and the ground, plus **automatic tilt at ground level** . Despite the narrow arms situated between the chassis rails, it offers **excellent lateral stability and overall performance**.

When comparing to other fold-away lifts with 1500 kg capacity, the DH-RP.15 offers a wide arm-center and 2 lift cylinders, but only half-dip ride. The DH-RM.20 is a heavier-duty model, but weighing heavier and offered at a higher budget. Like all other fold-away lifts, the hidden storage under the chassis is **ideal for frequent access to loading docks** .

The DH-RC.15 is primarily designed for trucks up to 26 T GVW, but can also be mounted on semi-trailers. A special execution for refrigerated bodies is available as an option [OAP628].



PLATFORM

- Steel base section with aluminium point, or full aluminium platform [option OAP601]
- The folding and unfolding of the platform are assisted by powerful torsion springs

FUNCTIONAL & MECHANICAL CHARACTERISTICS

- Conical / wedge platform. Level ride with automatic tilt at ground level
- Fixed stabiliser rods, platform orientation is only adjustable during installation

HYDRAULICAL CHARACTERISTICS

- 1 centrally mounted lift cylinder
- Electrical safety valves on all cylinders
- Manual emergency operation on all electrovalves
- Cylinder piston rods in hard-chromed stainless steel
- Cylinders equipped with rubber gaitors and lubrication
- Robust pump unit 12V or 24V DC mounted at the side of the lift frame
- Power-down (double acting descend) available as an option [OAH025.1]

ELECTRICAL CHARACTERISTICS

- Exterior control box with main battery isolator switch and removable key [OAE030.BT.0]
- Electrical controls without sensitive electronic components
- Safe exterior controls with compulsory 2-hand operation
- Electric motor with thermal cut-out fuse

FITTING

- Bolt-on mounting plates for quick and easy fitting [OAM010]
- Narrow arm width for mounting between the chassis beams
- Integrated floor plate for flush mounting available as an option [OAM003 / 004]

FINISH & MAINTENANCE

- Low-maintenance bearings in all articulation points, plus grease nipples
- Lift frame in Protection PLUS finish (zinc phosphate + KTL epoxy primer + polyester powder top coat)
- Steel base section standard in KTL finish [OAT126.R]
- Alu platform or platform sections in natural finish

Disclaimer: data and images of lifts and options are indicative, and may vary in function of the lift execution and vehicle details. Ask confirmation from DHOLLANDIA.



TECHNICAL CHARACTERISTICS**DH-RC.15**

Lift frame	150 x 150 mm
Cylinders	1 lift cylinder + 2 fixed stabilisers
Type of ride	Wedged platform, level ride with automatic tilt at ground level
Platform material	Steel / Alu or Alu / Alu
Standard platform depths	1250 - 1450 mm
Standard platform widths	- 2000 - 2200 mm - Other widths on request [option OAP603]
Lift arm lengths	880 - 980 mm
Lift arm widths	500 mm
Mounting	- Rear floor plate [OAM003] - N-A bed extension plate + side ladders [OAM051 + OAM052.LR] - Adapted for refrigerated floor [option OA628]
Standard control unit	OAE030.BT
Standard finish of the lift frame	Protection PLUS [OAT102]

MOUNTING DIMENSIONS**DH-RC.15**

larm	880	980
K max.	1385	1510
K min. loaded	1010	1105
C max.	745	860
C min.	450	450
CO max.	640	650
M at C max.	870	905
M at C min.	1120	1230
V max.	1250	1450





OAE001 - 2-button wander lead with spiral cable



OAE015.PR - 2 function toggle switch control (principal control)



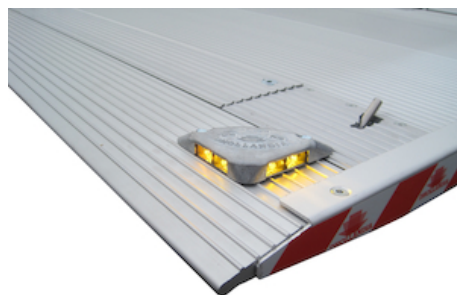
OAE015.O - 2 function toggle switch control (option)



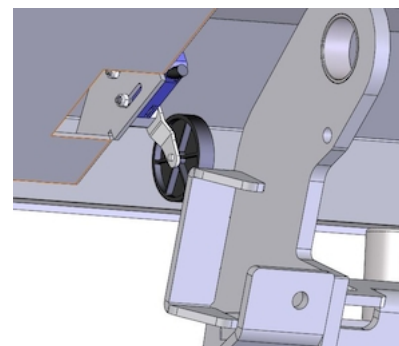
OAE030.BT.0 - Exterior joystick control box + main battery isolator switch (+ turn switch)



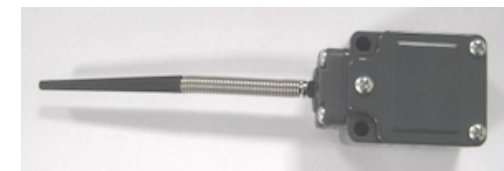
OAE041.BP.0 - Arctic push-button control box + main battery isolator switch (+ push button)



OAE200 - Flashing platform lights



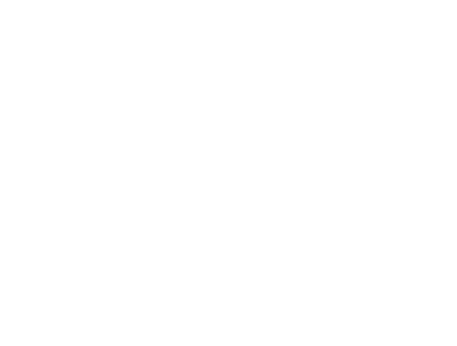
OAE205 - Limit switch + buffer DH-R*



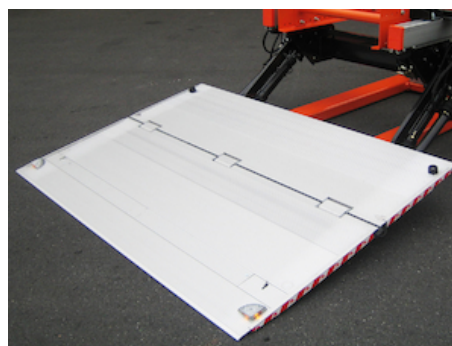
OAE213 - Limit switch E0387 (supplied loose)



OAE503.1 - Cabin switch (single use)



OAH025.1 - POWER DOWN function + 1 starter solenoid

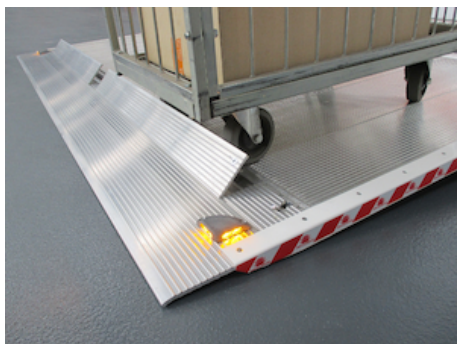


OAP601 - Fixed part of folding platform in ALU instead of steel



OAP100.M - 2-piece symm. roll-stops in the platform point - MANUAL





OAP100.A - 2-piece symm. roll-stops in the platform point - AUTOMATIC

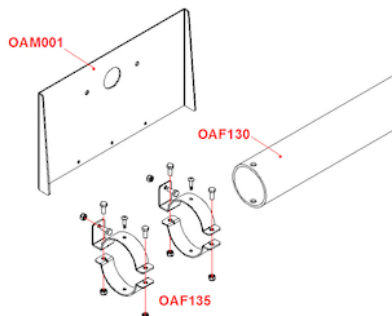


OAP603 - Non-standard width for foldable platform

OAP628 - Platform hands R... adapted for insulated floor



OAF130 - Round bumper tube mounted to the lift arms

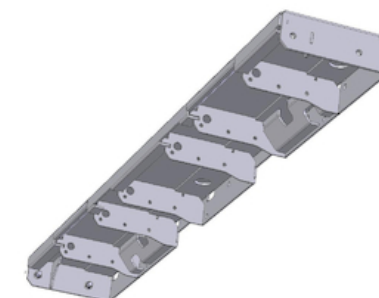


OAF135 - Brackets for light plates on bumper OAF130



OAM049 - Pull-out foot step mounted on lift arms R...

OAM003 - Rear floor traverse RC10/RC20/RM20



OAM051 - Bed extension plate (N-A)

OAM052.LR - 2 side ladders L+R for OAM051

OAM053 - Widening blocs for bed extension L+R

OAM057.LR - 2 side ladders L+R for OAM041_051 (flex)

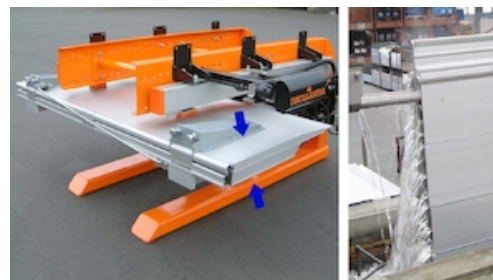
OAT020 - Reflecting platform flags type TÜV





OAT023 - Reflecting platform flags type Export Red

OAT127.R - GALVA finish for steel part of DHR*/SK platform



OAT136 - Anodisation alu base section + point DH-S and DH-R



OAT137 - Anodisation of foldable alu point



OAU100 - Control box on L side (R steering wheel for UK)