

# Fold-away lift DH-RP.06

600 Kg



# DHOLLANDIA





Flush mount with floor plate integrated inside the vehicle body



Mounting with floor extension plate added behind the rear sill of the vehicle

## The lightest and most compact of fold-away lifts

The **DH-RP.06 600 kg** is the lightest lift of a new generation of efficiently designed, **light-weight yet very strong** fold-away tail lifts. These DH-RP lifts are equipped with a **full aluminium platform**, and feature a **half-dip platform ride** from the vehicle floor to the ground.

In its travel position, the DH-RP.06 is safely stored underneath the chassis of the vehicle. Fold-away lifts offer **free access to the cargo space** at all times. Vehicles equipped with such tail lifts can therefore easily reverse into loading docks, or give access to fork lifts for unloading and loading.

The DH-RP.06 is designed for utility and commercial vehicles up to 7.5T GVW. It is **very easy to use**, and has **minimal impact on the pay-load**. DH-RP.06 and DH-RP.10 are very popular on light-duty rental fleets.

- + Best-seller in the light-duty range: superior finish, platform stability and performance.
- + Lift combines maximum operational reliability with a great ease of use.
- + Excellent price-quality ratio.
- + Minimum weight, maximum pay-load. Absolute weight champion for light-duty commercial vehicles.
- + Safely stored under the vehicle chassis. No damage when reversing into loading docks, or when loading or unloading with a fork lift. Free access to the cargo space.
- + Lift frame in hot-dip zinc plated or "galvanised" finish. Best possible protection against corrosion [OAT104].





Bolt-on mounting plates for quick and easy fitting [OAM010]



Pump unit 12V or 24V DC, accessible on 4 sides for easy maintenance



Electrical controls without sensitive electronic components

**PLATFORM**

- Weight-saving full aluminium platform (base section + foldable point)
- The folding and unfolding of the platform are assisted by powerful torsion springs

**FUNCTIONAL & MECHANICAL CHARACTERISTICS**

- Half-dip ride. Progressive platform tilt while lifting / lowering
- Alternative available with automatic tilt at ground level. See DH-RC.10
- Fixed stabiliser rods, platform orientation is only adjustable during installation

**HYDRAULICAL CHARACTERISTICS**

- 1 centrally mounted lift cylinder
- Electrical safety valves on all cylinders
- Manual emergency operation on all electrovalves
- Cylinder piston rods in hard-chromed stainless steel
- Cylinder(s) equipped with rubber gaitors
- Robust pump unit 12V or 24V DC mounted at the side of the lift frame

**ELECTRICAL CHARACTERISTICS**

- Exterior control box with main battery isolator switch and removable key [OAE030.BT.0]
- Electrical controls without sensitive electronic components
- Safe exterior controls with compulsory 2-hand operation
- Electric motor with thermal cut-out fuse

**FITTING**

- Bolt-on mounting plates for quick and easy fitting [OAM010]
- Narrow arm width for mounting between the chassis beams
- Compact lift frame and short lift arms for fitting in a short mounting space
- Integrated floor plate for flush mounting available as an option [OAM003 / 004]

**FINISH & MAINTENANCE**

- Low-maintenance bearings in all articulation points, plus grease nipples
- Lift frame in Protection PLUS finish (zinc phosphate + KTL epoxy primer + polyester powder top coat)
- Alu platform or platform sections in natural finish

Disclaimer: data and images of lifts and options are indicative, and may vary in function of the lift execution and vehicle details. Ask confirmation from DHOLLANDIA.



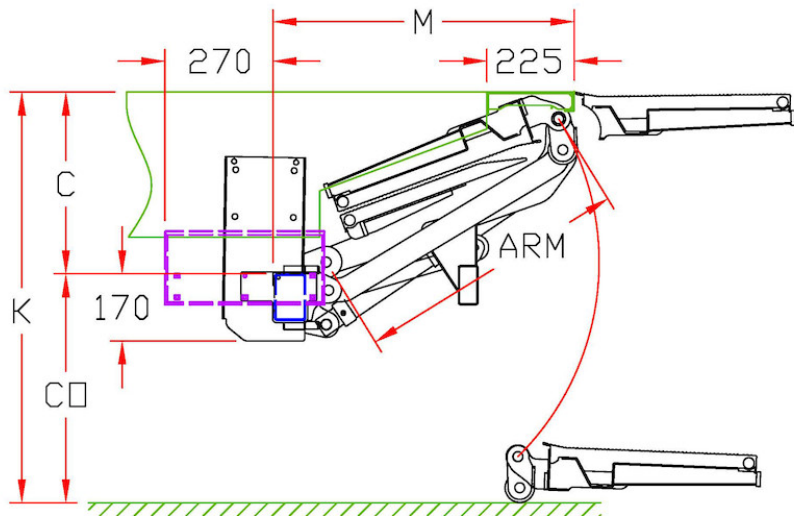


**TECHNICAL CHARACTERISTICS**
**DH-RP.06**

<b>Lift frame</b>	120 x 80 mm
<b>Cylinders</b>	1 lift cylinder + 2 fixed stabilisers
<b>Type of ride</b>	Progressive inclination while lifting / lowering (half-dip ride)
<b>Platform material</b>	Alu / Alu
<b>Standard platform depths</b>	950 - 1050 mm
<b>Standard platform widths</b>	- 1500 - 2000 mm - Other widths on request [option OAP303]
<b>Lift arm lengths</b>	700 mm
<b>Lift arm widths</b>	565 mm
<b>Mounting</b>	- Rear floor plate, flat plate [OAM004.F] - Rear floor plate, tear plate [OAM004.T]
<b>Standard control unit</b>	OAE030.BT
<b>Standard finish of the lift frame</b>	Hot-dip zinc plated finish [OAT104]

**MOUNTING DIMENSIONS**
**DH-RP.06**

<b>larm</b>		<b>700</b>
<b>K max.</b>		1050
<b>K min. loaded</b>	V = 950 / 1050	770 / 820
<b>C max.</b>		465
<b>C min.</b>	V = 950 / 1050	300 / 350
<b>CO max.</b>		585
<b>M</b>	at C max.	765
<b>M</b>	at C min. for V = 950 / 1050	860 / 840
<b>V max.</b>		1050





OAE001 - 2-button wander lead with spiral cable



OAE015.PR - 2 function toggle switch control (principal control)



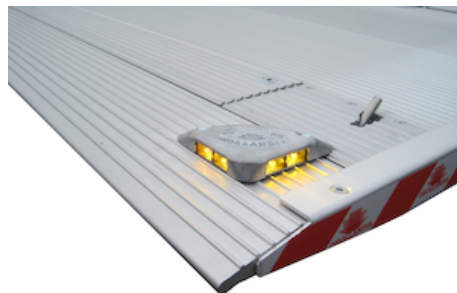
OAE015.O - 2 function toggle switch control (option)



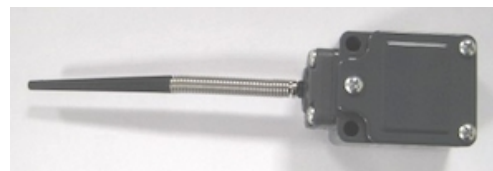
OAE030.BT.0 - Exterior joystick control box + main battery isolator switch (+ turn switch)



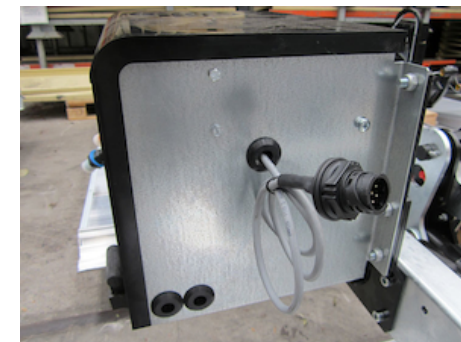
OAE041.BP.0 - Arctic push-button control box + main battery isolator switch (+ push button)



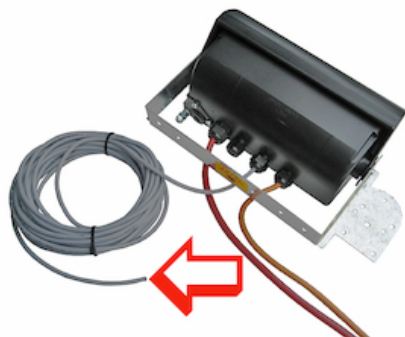
OAE200 - Flashing platform lights



OAE213 - Limit switch E0387 (supplied loose)



OAE500 - VEHH plug connection for dashboard switch



OAE501.12 - VEHH wire connection for dashboard switch 12 m



OAE503.1 - Cabin switch (single use)

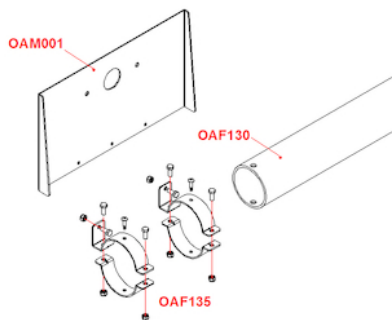


OAE503.2 - Cabin / dashboard switch



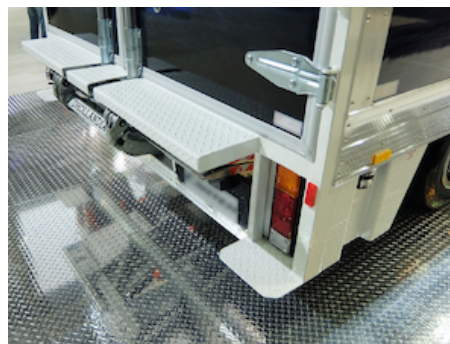
OAF130 - Round bumper tube mounted to the lift arms



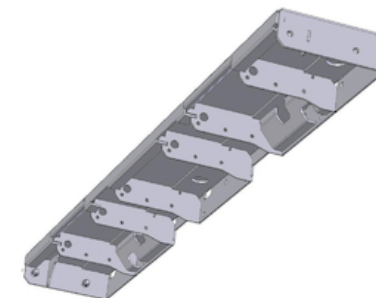


OAF135 - Brackets for light plates on bumper OAF130

OAM004.F - Rear floor traverse RP06/RP10 (flat plate)



OAM004.T - Rear floor traverse RP06/RP10 (tear plate)



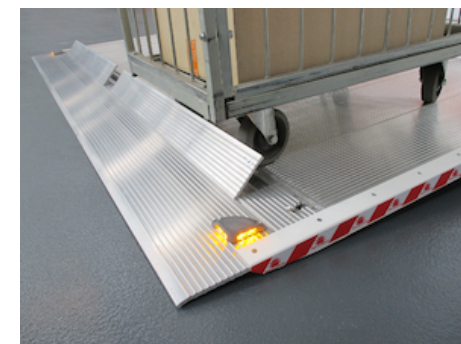
OAM051 - Bed extension plate (N-A)

OAM052.LR - 2 side ladders L+R for OAM051

OAM057.LR - 2 side ladders L+R for OAM041\_051 (flex)



OAP100.M - 2-piece symm. roll-stops in the platform point - MANUAL



OAP100.A - 2-piece symm. roll-stops in the platform point - AUTOMATIC



OAP601 - Fixed part of folding platform in ALU instead of steel



OAP603 - Non-standard width for foldable platform



OAP620.C - Platform lock DH-RP with steel cable



OAT020 - Reflecting platform flags type TÜV

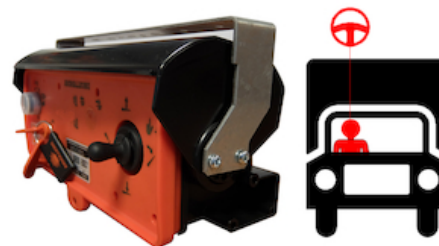




OAT023 - Reflecting platform flags type Export Red



OAT136 - Anodisation alu base section + point DH-S and DH-R



OAU100 - Control box on L side (R steering wheel for UK)

