

# Fold-away lift DH-RP.10

750 - 1000 Kg



# DHOLLANDIA





Flush mount with floor plate integrated inside the vehicle body



Mounting with floor extension plate added behind the rear sill of the vehicle

## Medium fold-away lift with half-dip platform ride

The **DH-RP.10 1000 kg** is the middle version of 3 lifts forming a young generation of **light-weight yet robust** fold-away lifts with **half-dip platform ride** from the vehicle floor to the ground.

In its travel position, the DH-RP.10 is safely stored underneath the chassis of the vehicle. Fold-away lifts offer **free access to the cargo space** at all times. Vehicles equipped with such tail lifts can therefore easily reverse into loading docks, or give access to fork lifts for unloading and loading.

The DH-RP.10 is designed for commercial vehicles up to 12T GVW. It is **very easy to use**, and has **minimal impact on the pay-load**. In standard configuration, its operation is gravity-down. **Power-down** (double acting descend) is available as an option for the harshest winter conditions [option OAH025.1].

- + Light-weight and yet very strong fold-away tail lift for lifting capacity 600-1000 kg
- + Very easy to use. Superior finish.
- + Excellent price-quality ratio.
- + Available with POWER-DOWN function, and arctic oil (-51°C). Suitable for the coldest winter temperatures.
- + Lift frame in hot-dip zinc plated or "galvanised" finish. Best possible protection against corrosion [OAT104].





Bolt-on mounting plates for quick and easy fitting [OAM010]



Robust pump unit 12V or 24V DC mounted at the side of the lift frame



Electrical controls without sensitive electronic components

**PLATFORM**

- Weight-saving full aluminium platform (base section + foldable point)
- The folding and unfolding of the platform are assisted by powerful torsion springs

**FUNCTIONAL & MECHANICAL CHARACTERISTICS**

- Half-dip ride. Progressive platform tilt while lifting / lowering
- Alternative available with automatic tilt at ground level. See DH-RC.10
- Fixed stabiliser rods, platform orientation is only adjustable during installation

**HYDRAULICAL CHARACTERISTICS**

- 1 centrally mounted lift cylinder
- Electrical safety valves on all cylinders
- Manual emergency operation on all electrovalves
- Cylinder piston rods in hard-chromed stainless steel
- Cylinder(s) equipped with rubber gaitors
- Robust pump unit 12V or 24V DC mounted at the side of the lift frame
- Power-down (double acting descend) available as an option [OAH025.1]

**ELECTRICAL CHARACTERISTICS**

- Control unit integrated in cover of pump unit, with main battery isolator switch and removable key [OAE039.BP]
- Electrical controls without sensitive electronic components
- Safe exterior controls with compulsory 2-hand operation
- Electric motor with thermal cut-out fuse

**FITTING**

- Bolt-on mounting plates for quick and easy fitting [OAM010]
- Narrow arm width for mounting between the chassis beams
- Compact lift frame and short lift arms for fitting in a short mounting space
- Integrated floor plate for flush mounting available as an option [OAM003 / 004]
- Robust vehicle bed extension plate with side stairs available as option [OAM051 + OAM052.LR]

**FINISH & MAINTENANCE**

- Low-maintenance bearings in all articulation points, plus grease nipples
- Lift frame in hot-dip zinc plated or "galvanised" finish. Best possible protection against corrosion [OAT104].

Disclaimer: data and images of lifts and options are indicative, and may vary in function of the lift execution and vehicle details. Ask confirmation from DHOLLANDIA.

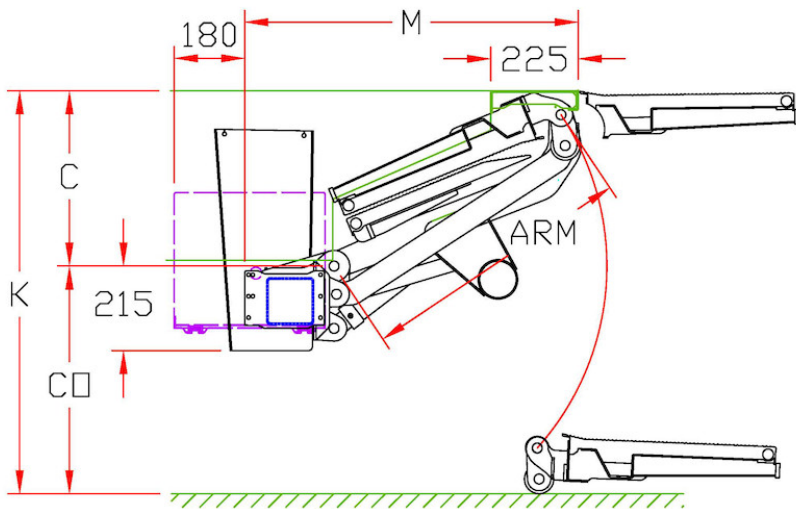


**TECHNICAL CHARACTERISTICS**
**DH-RP.10**

<b>Lift frame</b>	120 x 120 mm
<b>Cylinders</b>	1 lift cylinder + 2 fixed stabilisers
<b>Type of ride</b>	Progressive inclination while lifting / lowering (half-dip ride)
<b>Platform material</b>	Alu / Alu
<b>Standard platform depths</b>	1050 - 1250 mm
<b>Standard platform widths</b>	- 2000 - 2150 - 2200 mm - Other widths on request [option OAP303]
<b>Lift arm lengths</b>	700 - 800 mm
<b>Lift arm widths</b>	565 mm
<b>Mounting</b>	- Rear floor plate, flat plate [OAM004.F] - Rear floor plate, tear plate [OAM004.T] - N-A bed extension plate + side ladders [OAM051 + OAM052.LR]
<b>Standard control unit</b>	OAE030.BT
<b>Standard finish of the lift frame</b>	Hot-dip zinc plated finish [OAT104]

**MOUNTING DIMENSIONS**
**DH-RP.10**

larm	700	800
<b>K max.</b>	1050	1170
<b>K min. loaded</b>	820	915
<b>C max.</b>	465	520
<b>C min.</b>	350	400
<b>CO max.</b>	585	650
<b>M</b> at C max.	845	925
<b>M</b> at C min.	920	1005
<b>V max.</b>	1050	1250





OAE001 - 2-button wander lead with spiral cable



OAE015.PR - 2 function toggle switch control (principal control)



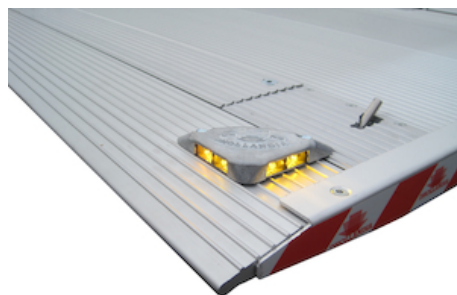
OAE015.O - 2 function toggle switch control (option)



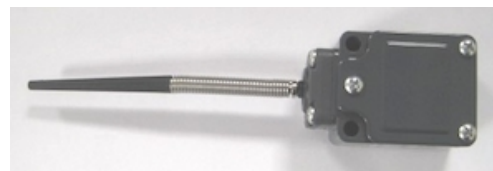
OAE030.BT.0 - Exterior joystick control box + main battery isolator switch (+ turn switch)



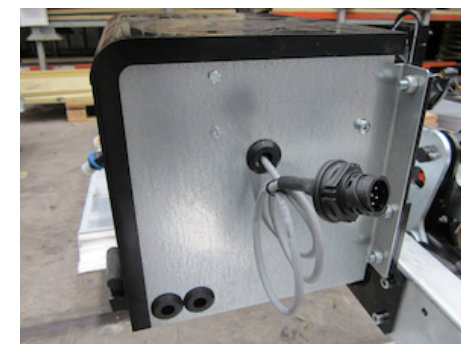
OAE041.BP.0 - Arctic push-button control box + main battery isolator switch (+ push button)



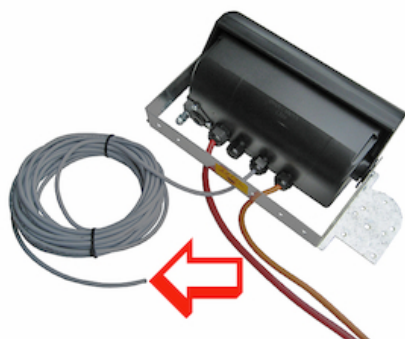
OAE200 - Flashing platform lights



OAE213 - Limit switch E0387 (supplied loose)



OAE500 - VEHH plug connection for dashboard switch



OAE501.12 - VEHH wire connection for dashboard switch 12 m



OAE503.1 - Cabin switch (single use)

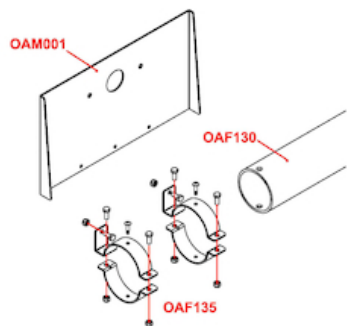


OAE503.2 - Cabin / dashboard switch



OAF130 - Round bumper tube mounted to the lift arms





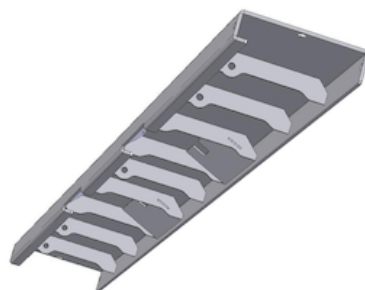
OAF135 - Brackets for light plates on bumper OAF130

OAH001 - Winter oil -30°C



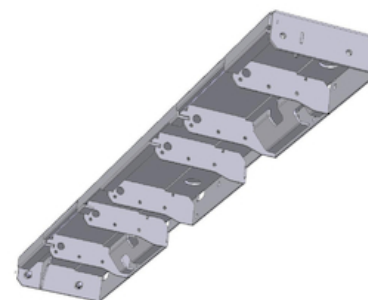
OAH002 - Arctic winter oil -52°C

OAH025.1 - POWER DOWN function + 1 starter solenoid



OAM004.F - Rear floor traverse RP06/RP10 (flat plate)

OAM004.T - Rear floor traverse RP06/RP10 (tear plate)

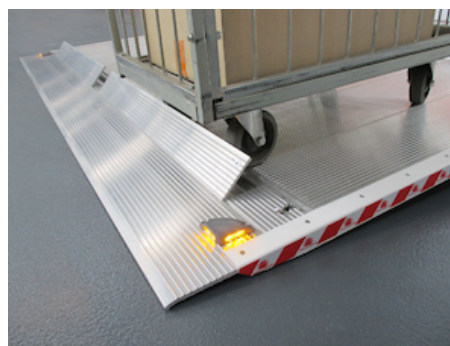


OAM051 - Bed extension plate (N-A)

OAM052.LR - 2 side ladders L+R for OAM051



OAP100.M - 2-piece symm. roll-stops in the platform point - MANUAL



OAP100.A - 2-piece symm. roll-stops in the platform point - AUTOMATIC



OAP601 - Fixed part of folding platform in ALU instead of steel

OAM057.LR - 2 side ladders L+R for OAM041\_051 (flex)





OAP620.C - Platform lock DH-RP with steel cable



OAT020 - Reflecting platform flags type TÜV



OAT023 - Reflecting platform flags type Export Red



OAT136 - Anodisation alu base section + point DH-S and DH-R



OAU100 - Control box on L side (R steering wheel for UK)

