

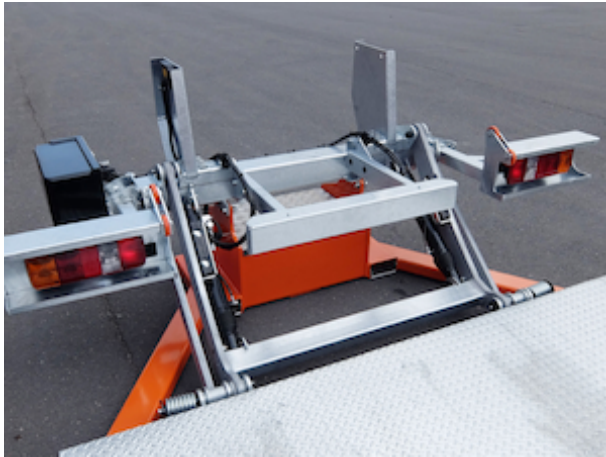
# Fold-away lift DH-RP.15

1000 - 1500 Kg



# DHOLLANDIA





Very stable construction with wide arm width for mounting outside of the chassis beams



Lift frame in hot-dip zinc plated or "galvanised" finish. Best possible protection against corrosion [OAT104].

## Top model fold-away lift with half-dip platform ride

The **DH-RP.15 1000 - 1500 kg** is the top model of 3 lifts forming a young generation of light-weight yet robust fold-away lifts with **half-dip platform ride** from the vehicle floor to the ground.

In comparison to the DH-RM.20 with level-ride, the DH-RP.15 is a more economical solution for unloading pallets and boxes, general freight and expediting.

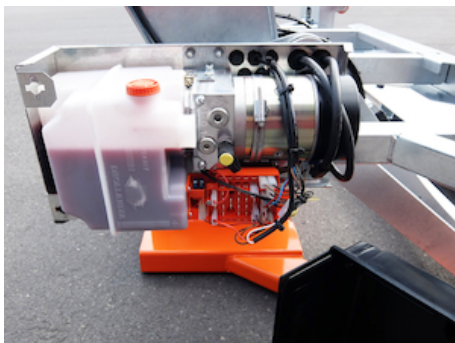
The DH-RP.15 is designed for straight trucks up to 26T GVW (excl. refrigerated bodies). In standard configuration, its operation is gravity-down. **Power-down** (double acting descend) is available as an option for the harshest winter conditions [option OAH025.1]. The DH-RP.15 is available with walk-ramp kit [OAM054].

- + Clever design offering maximum platform stability and operational reliability, with a minimal proper weight
- + Easy to fit. Bolted connections possible between lift frame and mounting plates; and between mounting plates and vehicle chassis.
- + Excellent price-quality ratio.
- + Available with POWER-DOWN function, and arctic oil (-51°C). Suitable for the coldest winter temperatures.
- + Lift frame in hot-dip zinc plated or "galvanised" finish. Best possible protection against corrosion [OAT104].





Manual emergency operation on all electrovalves



Pump unit 12V or 24V DC, accessible on 4 sides for easy maintenance



Arctic exterior control box with IP67 rated sealed contacts, and a main battery isolator switch with removable key [OAE041.BP]

## CHARACTERISTICS

DH-RP.15

### PLATFORM

- Reinforced steel base section with aluminium point, or weight saving full aluminium platform [option OAP601]
- The folding and unfolding of the platform are assisted by powerful torsion springs

### FUNCTIONAL & MECHANICAL CHARACTERISTICS

- Half-dip ride. Progressive platform tilt while lifting / lowering
- Alternative available with level-ride and automatic tilt at ground level. See RC.15 and RM.20
- Fixed stabiliser rods, platform orientation is only adjustable during installation

### HYDRAULICAL CHARACTERISTICS

- 2 double-acting lift cylinders (Power-down)
- Electrical safety valves on all cylinders
- Manual emergency operation on all electrovalves
- Cylinder piston rods in hard-chromed stainless steel
- Cylinders equipped with rubber gaitors and lubrication
- Pump unit 12V or 24V DC, accessible on 4 sides for easy maintenance

### ELECTRICAL CHARACTERISTICS

- Arctic exterior control box with IP67 rated sealed contacts, and a main battery isolator switch with removable key [OAE041.BP]
- Electrical controls without sensitive electronic components
- Safe exterior controls with compulsory 2-hand operation
- Electric motor with thermal cut-out fuse

### FITTING

- Bolt-on mounting plates for quick and easy fitting [OAM010]
- Premounted mounting plates at a fixed center distance [OAM011]
- Integrated floor plate for flush mounting available as an option [OAM003 / 004]
- Robust bed-extension plate with side ladders available as option [OAM051 + OAM052.LR]
- Fixed 3-piece bumper bar available as option [OAF100.ST]
- Fixed 3-piece bumper bar + integrated light boxes available as an option [OAF106]

### FINISH & MAINTENANCE

- Low-maintenance bearings in all articulation points, plus grease nipples
- Lift frame in hot-dip zinc plated or "galvanised" finish. Best possible protection against corrosion [OAT104].
- Steel base section standard in hot-dip zinc plated finish [OAT127]
- Alu platform or platform sections in natural finish

Disclaimer: data and images of lifts and options are indicative, and may vary in function of the lift execution and vehicle details. Ask confirmation from DHOLLANDIA.

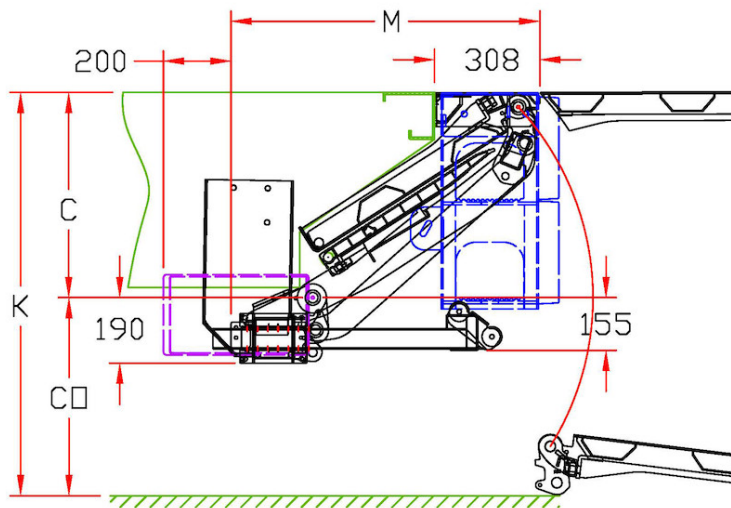


**TECHNICAL CHARACTERISTICS**
**DH-RP.15**

<b>Lift frame</b>	120 x 120 mm
<b>Cylinders</b>	2 lift cylinders + 2 fixed stabilisers
<b>Type of ride</b>	Progressive inclination while lifting / lowering (half-dip ride)
<b>Platform material</b>	Steel / Alu or Alu / Alu
<b>Standard platform depths</b>	1250 mm
<b>Standard platform widths</b>	- 2000 - 2150 - 2200 mm - Other widths on request [option OAP303]
<b>Lift arm lengths</b>	820 mm
<b>Lift arm widths</b>	1100 mm
<b>Mounting</b>	- Rear floor plate [OAM003] - N-A bed extension plate + side ladders [OAM051 + OAM052.LR]
<b>Standard control unit</b>	OAE030.BT
<b>Standard finish of the lift frame</b>	Hot-dip zinc plated finish [OAT104]

**MOUNTING DIMENSIONS**
**DH-RP.15**

larm	820	?
<b>K max.</b>	1300	on demand
<b>K min.</b>	990	
<b>CT max.</b>	600	
<b>CT std.</b>	600 / 500	
<b>COT max.</b>	700	
<b>M</b>	at C max. 905	
<b>M</b>	at C min. 985	
<b>V max.</b>	1270	1450





OAE001 - 2-button wander lead with spiral cable



OAE015.PR - 2 function toggle switch control (principal control)



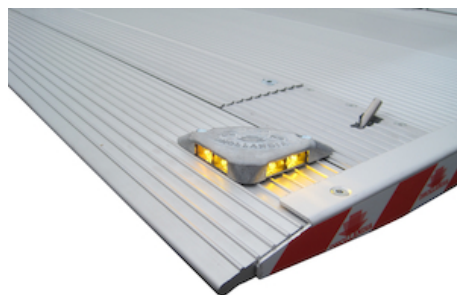
OAE015.O - 2 function toggle switch control (option)



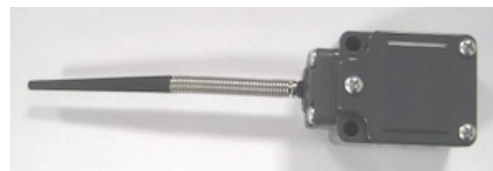
OAE030.BT.0 - Exterior joystick control box + main battery isolator switch (+ turn switch)



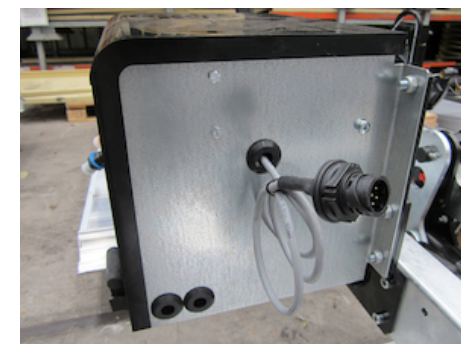
OAE041.BP.0 - Arctic push-button control box + main battery isolator switch (+ push button)



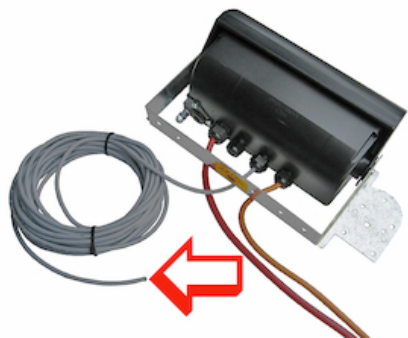
OAE200 - Flashing platform lights



OAE213 - Limit switch E0387 (supplied loose)



OAE500 - VEHH plug connection for dashboard switch



OAE501.12 - VEHH wire connection for dashboard switch 12 m



OAE503.1 - Cabin switch (single use)



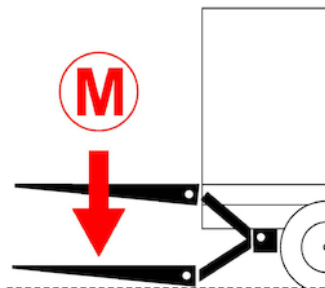
OAE503.2 - Cabin / dashboard switch

OAH001 - Winter oil -30°C

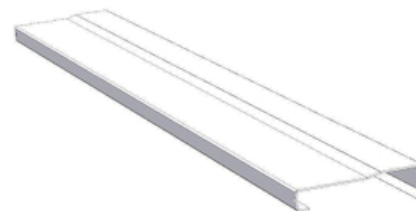




OAH002 - Arctic winter oil -52°C



OAH025.1 - POWER DOWN function + 1 starter solenoid



OAM003 - Rear floor traverse RC10/RC20/RM20



OAM010 - Mounting plates bolted onto lift frame



OAM011 - Mounting plates fixed on lift frame

OAM046.1 - Mounting bar lift cylinders DH-R\*



OAM051 - Bed extension plate (N-A)

OAM052.LR - 2 side ladders L+R for OAM051

OAM053 - Widening blocs for bed extension L+R

OAM054 - Walk-ramp kit for DH-R\*

OAM057.LR - 2 side ladders L+R for OAM041\_051 (flex)



OAF100.ST - Fixed 3-piece bumper in steel, mounted to the lift frame





OAF106 - Fixed 3-piece bumper in steel + integrated box for rear truck lights



OAP100.M - 2-piece symm. roll-stops in the platform point - MANUAL



OAP100.A - 2-piece symm. roll-stops in the platform point - AUTOMATIC



OAP601 - Fixed part of folding platform in ALU instead of steel



Non-standard

OAP603 - Non-standard width for foldable platform



OAP620.C - Platform lock DH-RP with steel cable



OAT020 - Reflecting platform flags type TÜV



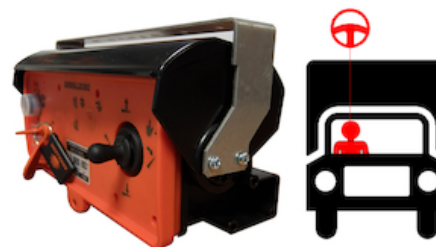
OAT023 - Reflecting platform flags type Export Red



OAT136 - Anodisation alu base section + point DH-S and DH-R



OAT137 - Anodisation of foldable alu point



OAU100 - Control box on L side (R steering wheel for UK)