

Multi-deck column lift DH-VB...D2

1000 - 2500 Kg



DHOLLANDIA



Multi-deck column lift with upper beam

The DH-VB... are specially designed to load and unload vehicles with multiple or moving loading floors. All DH-VB... are equipped with a flat platform, offering a smooth and level ride between the various loading floors and the ground.

The DH-VB... have a cylinder beam at vehicle roof level. These **heavy duty lifts** are suitable for vehicles with **insufficient ground clearance to mount a DH-VO lower beam lift** (too low vehicle floor level); and for applications with a considerable **risk that harmful products could penetrate in the cylinder beam** (e.g. animal transport).

Upper beam lifts are available in various models and for different capacity classes. All exterior lifts are equipped with 2 tilt cylinders, hence the platform orientation is adjustable from the exterior controls.



PLATFORM

- Platform construction: steel frame with aluminium infill profiles
- Fixed leading edge at outboard platform edge [hinged ramps available as an option]
- Inboard platform edge is equipped with toe-guard profile and safety switch

FUNCTIONAL & MECHANICAL CHARACTERISTICS

- Overhead beam: operated by a single lift cylinder mounted in a beam at vehicle roof level, and a set of steel cables and pulleys
- Double steel cable system: 2 main lift cables + 2 safety cables
- Electrical steel cable rupture detection plus emergency operation
- Lifting height up to approx. 1380 mm under roof level (depending on vehicle dimensions)
- Lifting height in function of the vehicle width
- Flat platform, level ride
- Platform tilt adjustable at any position from the exterior controls

HYDRAULICAL CHARACTERISTICS

- Single acting lift cylinder in the overhead beam at roof level, plus safety valve
- Hydraulic closure. 2 single acting tilt cylinders, positioned horizontally [OVH001.0]
- Robust pump unit with air cooled 24V DC motor, or standard 12V motor, supplied loose for mounting on the vehicle chassis. (12V operation is strongly advised against)
- Electrical safety valves on all cylinders
- Manual emergency operation on all electrovalves

ELECTRICAL CHARACTERISTICS

- Exterior control box with main battery disconnect switch and removable key [OAE030.BT.0]
- Electrical controls without sensitive electronic components
- Safe exterior controls with compulsory 2-hand operation

FITTING

- Robust steel columns and steel cylinder beam, for welded mounting to the vehicle chassis and the rear frame of the body
- CE-conforming toe-guard to be built by the body builder at the outboard edge of the loading floor(s). Advice available at DHOLLANDIA

FINISH & MAINTENANCE

- Low-maintenance bearings in all articulation points
- Treatment: high-quality zinc primer + polyester powder coating
- Alu platform or platform sections in natural finish
- Not included in basic configuration: loading floor extension; toe-guard protection at the rear end of the loading floor; and guard rails
- Guard rails are mandatory above 2000 mm lifting height (CE), and strongly recommended for lower lifting heights. See electrical options for platform controls integrated in one of the guard rails.

Disclaimer: data and images of lifts and options are indicative, and may vary in function of the lift execution and vehicle details. Ask confirmation from DHOLLANDIA.





OAE030.BT.0 - Exterior joystick control box + main battery isolator switch (+ turn switch)



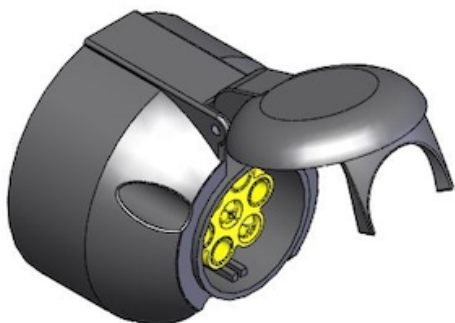
OAE001 - 2-button wander lead with spiral cable



OVE001 - 2-button wander lead + long spiral cable



OVE003.L - Female plug mounted on platform LEFT side



OVE003.R - Female plug mounted on platform RIGHT side



OVE006.L - 4-button foot controls mounted LEFT side



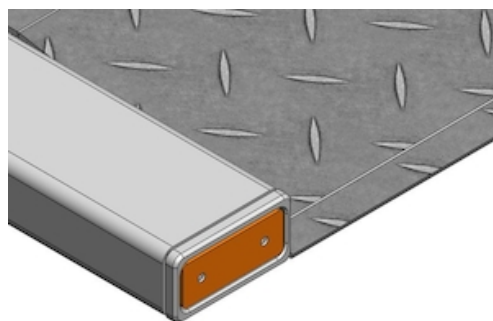
OVE006.R - 4-button foot controls mounted RIGHT side



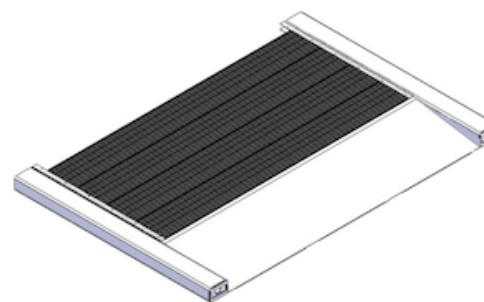
OAE031.Z.0 - 3+1 button exterior control box without main battery isolator switch



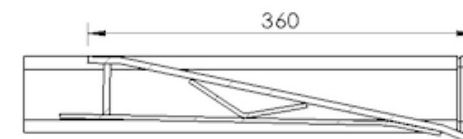
OAE038.A - Main battery isolator switch with demountable key



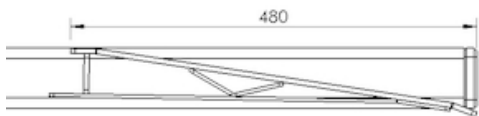
OVE201.A - Platform lights IN the platform tubes



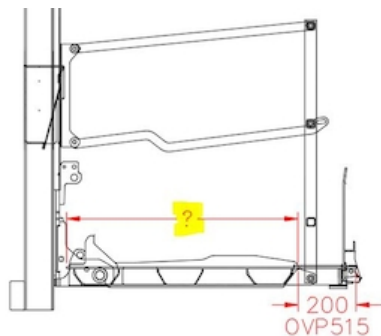
OVP003 - Platform DH-V* manufactured from steel frame + aluminium profiles



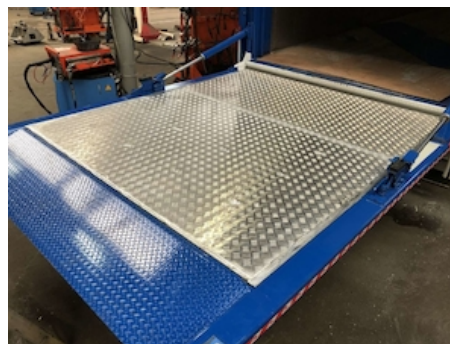
OVP010.360 - Short fixed leading edge 360 mm



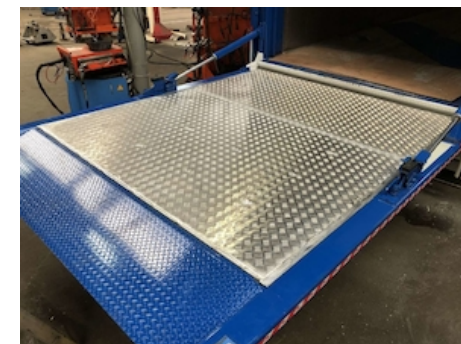
OVP010.500 - Fixed leading edge 500 mm



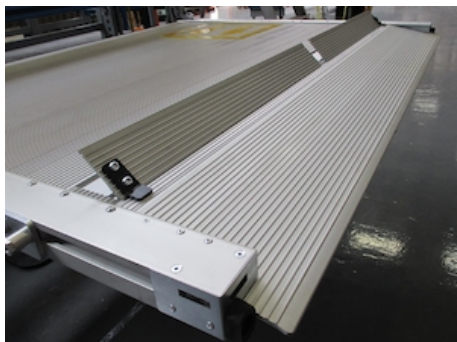
OVP012.S - Extension of the steel platform per 100 mm



OVP020.2000 - 5/7 mm alu tear plate for point load <2m



OVP020.3000 - 5/7 mm alu tear plate for point load <3m



OVP100.M - 2 manual rollstops in profile before point

OVP100.A - 2 automatic rollstops in profile before point



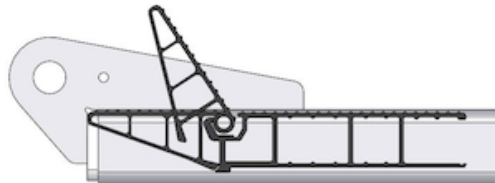
OVP120.S.R - 2 hinged ramps in steel at rear edge of platform



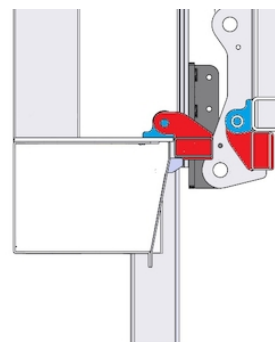
OVP120.S.S - 2 hinged ramps in steel at L+R side edges of platform



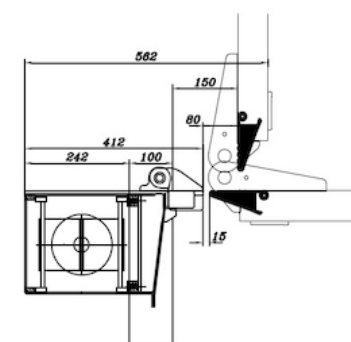
OVP400 - Platform without toe-guard flap



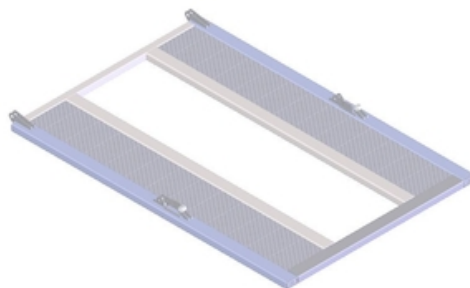
OVP401 - Alu toe-guard flap + safety switch (DD)



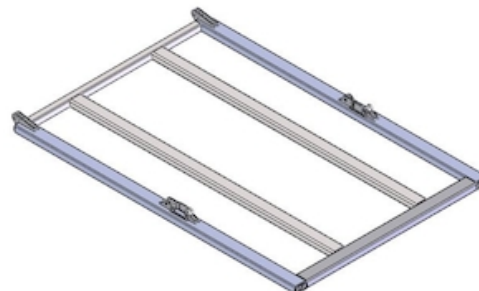
OVP404.S - Double toe-guard flaps steel-steel on VO-B10



OVP404.A - Double toe-guard flaps steel-alu on VO-B10



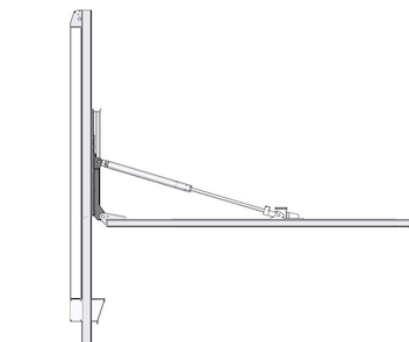
OVP405 - Extra toe-guard flap for 2nd vehicle floor



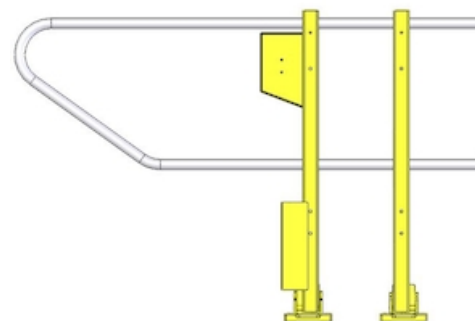
OVP502 - Preparation for middle door with aluminium side profiles

OVP503 - Preparation for middle door without aluminium side profiles

OVP504 - Aluminium platform profiles welded on the outside



OVP300 - Platform supplied without safety rails

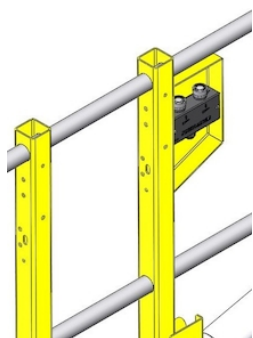


OVP301 - 2 hinged side safety rails L+R - STD

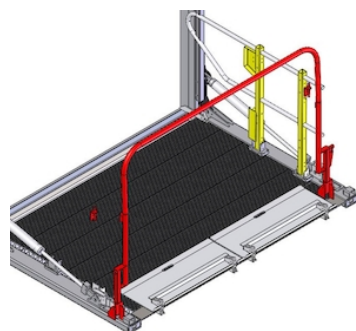


OVE150.R - Toggle-switch up / down control on RIGHT-side guard rail

OVP505 - Aluminium platform profiles welded on both sides



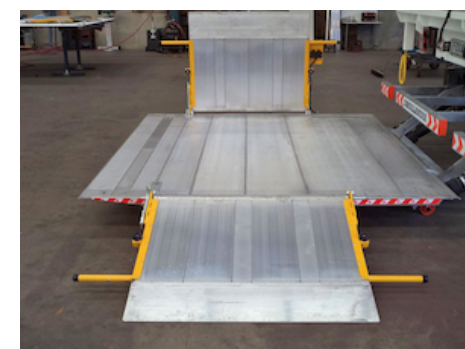
OVE150.L - Toggle-switch up / down control on LEFT-side guard rail



OVP304 - 3-side safety rails for trolleys

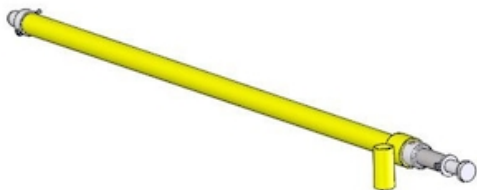


OVP305 - 2 combined side rails / side ramps on the platform L+R

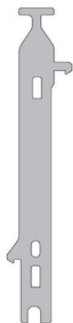


OVP305.B - 2 heavy-duty combined side rails / side ramps on the platform L+R

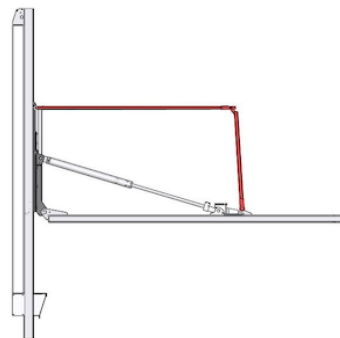




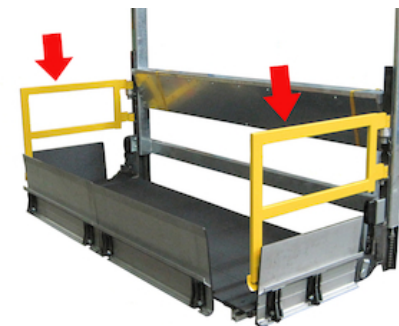
OVP307 - Telescopic fall protection between 2 side rails



OVP309 - Lock for safety rail on platform surface



OVP330 - Automatically folding safety rails VB-VO-VX



OVP350 - Pivotable safety rails on lift runners L+R for DHVO...K1 / VB...E1



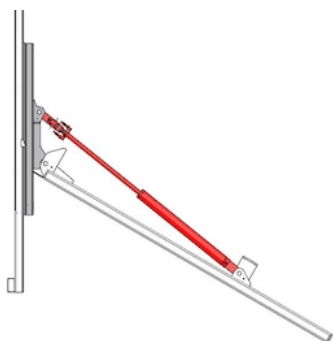
OVP351.01 - Safety rails on lift runners T1 - 3 sides



OVH001.0 - Tilt cylinders mounted horizontally (std.)

OVH002.1 - Tilt cylinders mounted vertically (option)

OVH006.10 - Downward platform inclination to -10°



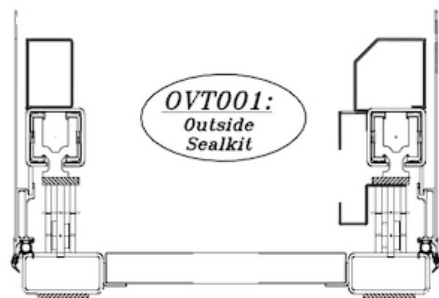
OVH006 - Inclination of platform to the ground (-45°)

OVH007 - Reinforced tilt cylinders VO/VB >2.5T

OVH110 - Double acting flow valve V189 open/close

OVH112 - 2 closing speeds (+ extra push button)





OVT001 - Shrouds + platform seals mounted at the outside of the lift columns



OVT110 - Aluminium profiles of the DH-V* platform in anodised finish



OAT020 - Reflecting platform flags type TÜV

OVT100 - Standard paint finish on DH-V* (2K epoxy + powder coating)



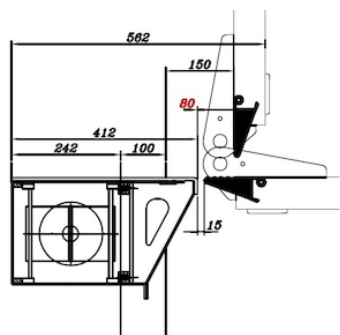
OAT023 - Reflecting platform flags type Export Red

OVF003.2 - Bolt-on fitting VB-VO-VX

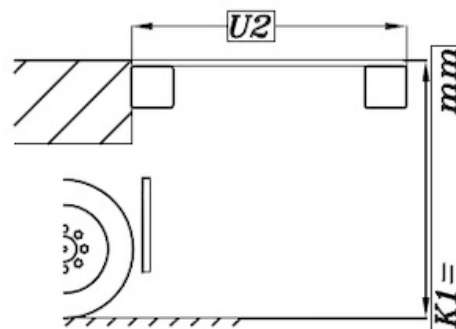
OVF001 - Platform mounted at ...mm above ground level



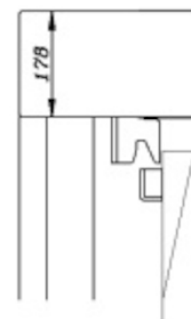
OVF002 - Travel lock pins under the lift runners



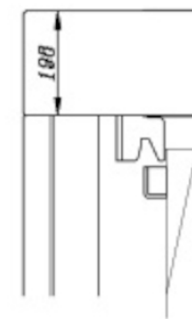
OVF030.80 - Free opening of 80 mm for side rails (VO3)



OVF055.B - Extension vehicle floor between columns (level 0)



OVF060.10 - Shallow cylinder beam 178 mm DH-VB 1000 kg



OVF060.15 - Shallow cylinder beam 198 mm DH-VB 1500 kg





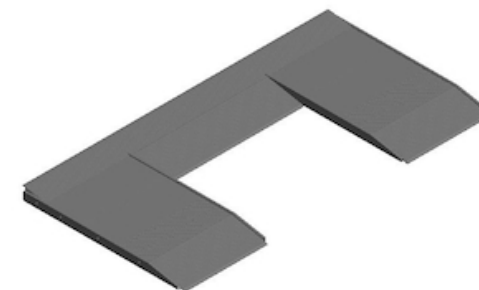
OVF061 - Short cylinder beam for DH-VB



OVU017 - Race execution + standard ramp



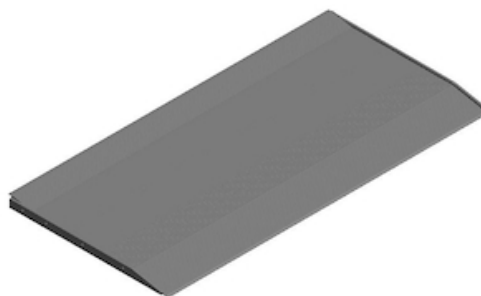
OVU018 - Special Race execution (without the ramp)



OVP200.1100 - Foldable ramp type A 1100 mm



OVP200.X - Foldable ramp type A custom made ...mm



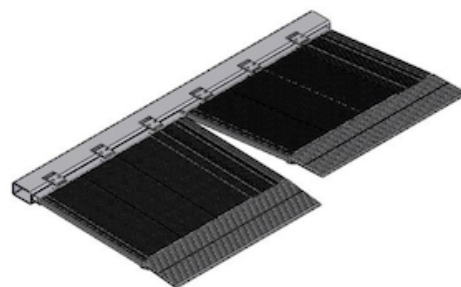
OVP202.1100 - Foldable ramp type B 1100 mm (full width)



OVP202.X - Foldable rampe type B custom made ...mm



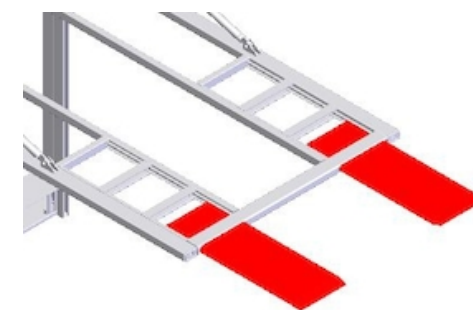
OVP203.1100 - Foldable ramp type C 1100 mm (full width)



OVP205.1050 - Foldable ramp type E 1050 mm (2 sections)



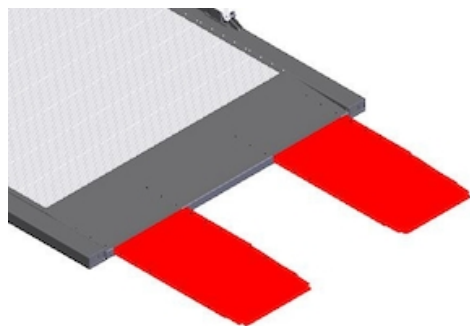
OVP205.X - Foldable ramp type E custom made ...mm (2 parts)



OVP210.1100 - 2 pull-out ramps 1100 mm - without alu profiles

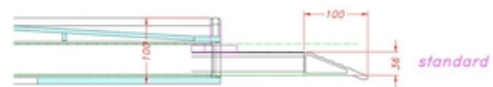
OVP203.X - Foldable ramp type C custom made ...mm





OVP210.X - 2 pull-out ramps ...mm - without alu profiles

OVP212.1100 - 2 pull-out ramps 1100 mm + alu top profiles



OVP212.X - 2 pull-out ramps ...mm + alu top profiles

