

Column lift DH-VO.20.D4

1000 - 1800 Kg



DHOLLANDIA



Removal lift up to 6 m height

The DH-VO.20.D4 is a **lower-beam lift**, equipped with a unique system of **telescopic lift columns**. It enables the platform to travel from flat on the ground to a level at **max. 6m above the ground** in one continuous movement.

The lift is equipped with hydraulic stabilising legs, to guarantee optimum safety when working at extreme heights.

The product offer includes a basic version for general applications and a REMOVAL execution [option OVU002.B]. The latter is specially designed for the transport and delivery of furniture and for removal activities.



PLATFORM

- Platform construction: steel frame with aluminium infill profiles
- Fixed leading edge at outboard platform edge [hinged ramps available as an option]
- Inboard platform edge is equipped with toe-guard profile and safety switch

FUNCTIONAL & MECHANICAL CHARACTERISTICS

- Lower beam: operated by 1 single lift cylinder, mounted in a beam at the vehicle floor level, and a set of chains and pulleys
- Double steel cable system: 2 main lift cables + 2 safety cables
- Electrical steel cable rupture detection plus emergency operation
- Telescopic lift runners for extreme lifting heights, above roof level
- Lifting height up to max. 6 m above ground level (depending on vehicle dimensions)
- Lifting height in function of the vehicle width
- Flat platform, level ride
- Platform tilt adjustable at any position from the exterior controls

HYDRAULICAL CHARACTERISTICS

- Single acting lift cylinder in the lower beam, equipped with a safety valve
- Hydraulic closure. 2 single acting tilt cylinders, positioned horizontally [OVH001.0]
- 2 hydraulic stabilising legs 4T, with separated controls
- Robust pump unit with air cooled 24V DC motor, or standard 12V motor, supplied loose for mounting on the vehicle chassis. (12V operation is strongly advised against)
- Electrical safety valves on all cylinders
- Manual emergency operation on all electrovalves

ELECTRICAL CHARACTERISTICS

- Exterior control box with main battery disconnect switch and removable key [OAE030.BT.0]
- Electrical controls without sensitive electronic components
- Safe exterior controls with compulsory 2-hand operation

FITTING

- Robust steel columns and steel cylinder beam, for welded mounting to the vehicle chassis and the rear frame of the body
- Cylinder beam at floor level suffices as CE-conform toe-guard. CE-conforming toe-guard must be built by the body builder at the outboard edge of the superior loading floor(s) [see also options]

FINISH & MAINTENANCE

- Low-maintenance bearings in all articulation points
- Treatment: high-quality zinc primer + polyester powder coating
- Alu platform or platform sections in natural finish
- Not included in basic configuration: guard rails
- Guard rails are mandatory above 2000 mm lifting height (CE), and strongly recommended for lower lifting heights. See electrical options for platform controls integrated in one of the guard rails.



FINISH & EXTRA KITS

- Roof construction included

Disclaimer: data and images of lifts and options are indicative, and may vary in function of the lift execution and vehicle details. Ask confirmation from DHOLLANDIA.

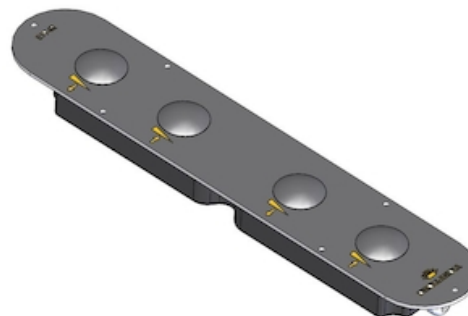




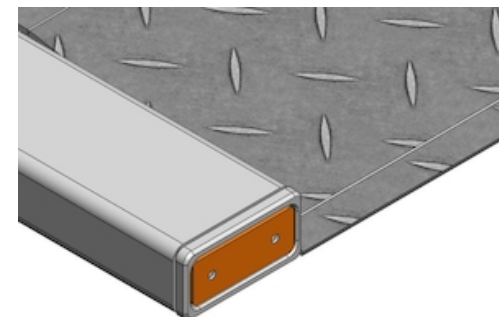
OAE030.BT.0 - Exterior joystick control box + main battery isolator switch (+ turn switch)



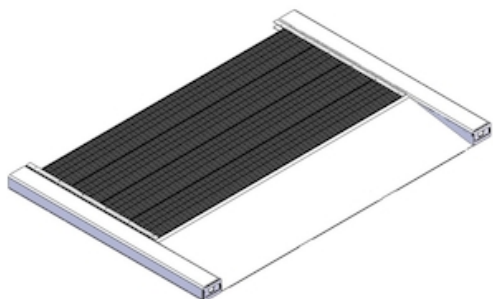
OVE006.L - 4-button foot controls mounted LEFT side



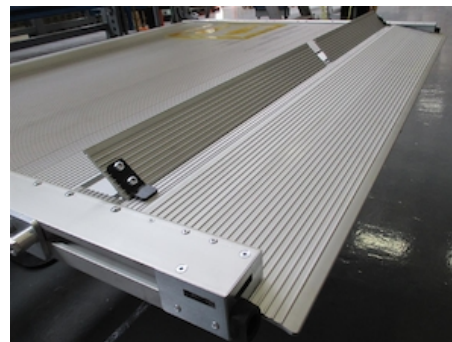
OVE006.R - 4-button foot controls mounted RIGHT side



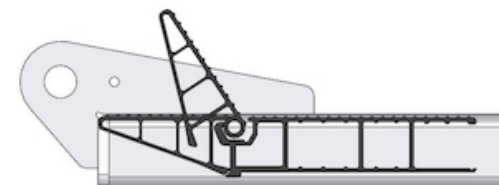
OVE201.A - Platform lights IN the platform tubes



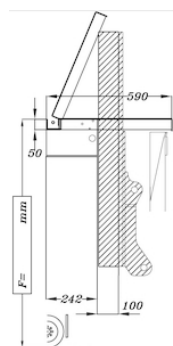
OVP003 - Platform DH-V* manufactured from steel frame + aluminium profiles



OVP100.M - 2 manual rollstops in profile before point

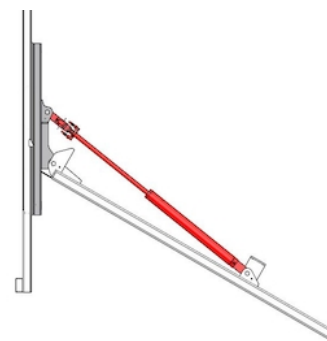


OVP401 - Alu toe-guard flap + safety switch (DD)



OVF054 - Roof construction VO + articulated trapdoors

OVP100.A - 2 automatic rollstops in profile before point



OVH006.10 - Downward platform inclination to -10°

OVH006 - Inclination of platform to the ground (-45°)

OAH013.60.LE - Hydr. stabilising leg straight 4T LE ... mm



OVU002.B - Removal execution type B



OVT110 - Aluminium profiles of the DH-V* platform in anodised finish

OVP504 - Aluminium platform profiles welded on the outside

OAH019 - SUPPL. independant stabilising legs + detection



OAT020 - Reflecting platform flags type TÜV



OAT023 - Reflecting platform flags type Export Red

OVT120.P - Steel platform frame of the DH-V* in galvanised finish (on demand)