

Column lift DH-VO.20.K9

2000 Kg



DHOLLANDIA



Most powerful lift with chain technology

The DH-VO.20.K9 is the **most powerful execution** in DHOLLANDIA's range of **chain-driven column lifts**. Whereas the 1500 kg capacity of the DH-VO.15.K1 is really mainstream, the 2000 kg lift capacity offered by this model is rather exceptional.

Because of the weight of the reinforced platform, DHOLLANDIA recommends to opt for **hydraulic closure to optimize the user comfort** :

- Hydraulic closure by means of 1 tilt cylinder, without adjustable platform orientation [OVH004]
- Hydraulic closure by means of 2 tilt cylinders, with adjustable platform orientation [OVH011.V]

The DH-VO.20 is always built in K9 execution [OVU013], to guarantee sufficient lift capacity. The optional K2 execution can help further to **increase the lifting height** for a given column width [OVU015.B].



PLATFORM

- Weight-saving aluminium platform, or robust heavy-duty steel platform
- Fixed leading edge at outboard platform edge [hinged ramps available as an option]
- Alu platform [OVP002.0]: manual open / close (assisted by torsion bars); hydraulic closure as option [OVH004]
- Steel platform: hydraulic closure [OVP001.1 + OVH004] highly recommended; manual open / close [OVP001.B.1] advised against
- Steel frame + alu infill profiles standard for hydraulic closure OVH011.V

FUNCTIONAL & MECHANICAL CHARACTERISTICS

- Lower beam: operated by 1 single lift cylinder, mounted in a beam at the vehicle floor level, and a set of chains and pulleys
- Reinforced heavy-duty steel columns and cylinder beam, standard in hot-dip zinc plated finish
- Reinforced heavy-duty chains and pulleys
- Lifting height to the (1st) loading floor of the vehicle
- Flat platform, level ride
- Lift system equipped with mechanical Load Safety Device (chain rupture device)

HYDRAULICAL CHARACTERISTICS

- Single acting lift cylinder in the lower beam
- OVH004 recommended for all steel platforms, and for all platforms > 1400 mm. With the single tilt cylinder OVH004 (option), operator can open platform from its 90° closed position to its 0° work position, and close it back. No intermediate adjustment of tilt or pitch possible.
- With the 2 tilt cylinders OVH011 (option), operator can open and close the platform, but also tilt it, and change the angle or pitch of the platform
- Robust pump unit 12V or 24V DC, supplied loose for mounting on the vehicle chassis
- Manual emergency operation on all electrovalves

ELECTRICAL CHARACTERISTICS

- Exterior control box with main battery disconnect switch and removable key [OAE030.BT.0]
- Electrical controls without sensitive electronic components
- Electric motor with thermal cut-out fuse

FITTING

- Welded fitting (standard) or bolt-on fitting [option OVF003] to the vehicle body
- Suitable for bodies with shutter doors, for dropside and flat bed bodies. With option OVF062 also suitable for closed bodies with barn doors.

FINISH & MAINTENANCE

- Low-maintenance bearings in all articulation points
- Lift frame in hot-dip zinc plated or "galvanised" finish. Best possible protection against corrosion [OVT121.F]

Disclaimer: data and images of lifts and options are indicative, and may vary in function of the lift execution and vehicle details. Ask confirmation from DHOLLANDIA.

Steel platform in hot-dip zinc plated finish. Best possible protection against corrosion [OVT121.P]



TECHNICAL CHARACTERISTICS**DH-VO.20.K9**

Lift system	Lower beam: operated by a single lift cylinder mounted in a steel beam at the vehicle floor level and a set of chains & pulleys
Open / close	<ul style="list-style-type: none">- Manual closure supported by torsion bars- Hydraulic closure without adjustable platform orientation as an option [OVH004]- Hydraulic closure with adjustable platform orientation as an option [OVH011.V]
Type of ride	Flat platform, level ride
Standard lift system	<ul style="list-style-type: none">- Flat platform with fixed leading edge- Roll-stops & hinged ramps available as an option
Material	<ul style="list-style-type: none">- Reinforced steel platform, or- Roll-stops & hinged ramps available as an option
Standard platform depths	<ul style="list-style-type: none">- 1000 - 1250 - 1500 mm- Other platform sizes on request- Max. depth = 2000 mm (condition = OVH004 + OVU019 platform support by means of side chains) or 2300 mm (condition = OVH004.2 + OVU019)
Standard control unit	OAE030.BT
Standard finish of the lift frame	Zinc primer + polyester powder coat

MOUNTING DIMENSIONS**DH-VO.20.K9**



OAE001 - 2-button wander lead with spiral cable



OAE031.Z.0 - 3+1 button exterior control box without main battery isolator switch



OAM026 - Mounting support type B for OAE031.Z



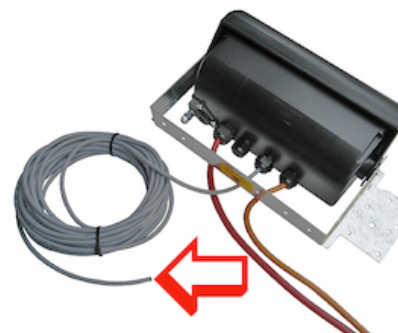
OAE038.A - Main battery isolator switch with demountable key



OAE041.BP.0 - Arctic push-button control box + main battery isolator switch (+ push button)



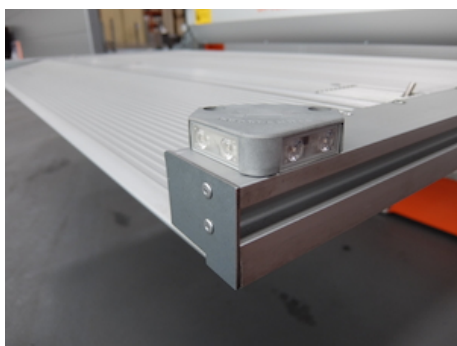
OAE500 - VEHH plug connection for dashboard switch



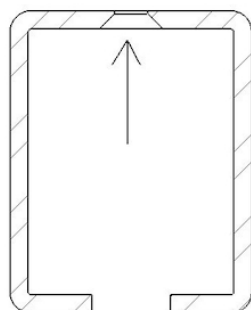
OAE501.12 - VEHH wire connection for dashboard switch 12 m



OAE503.1 - Cabin switch (single use)



OVE201.C - Flashing platform lights, battery powered

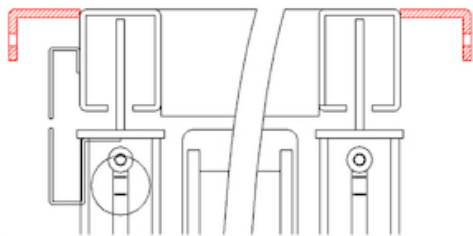


OVF003.1 - Bolt-on fitting through column VB15-VO.K1

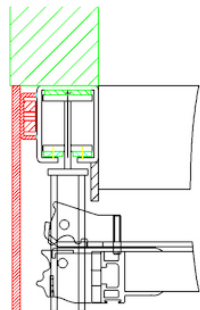
OVF004 - Bolt-on fitting VO...K1 with side angle



OVF010 - Short columns / long lift runners



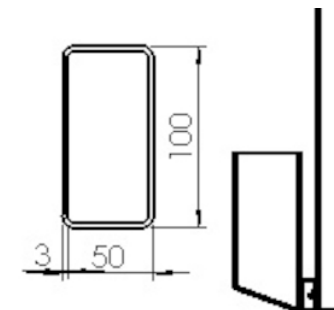
OVP014 - Mounting angles for impact protection plates



OVP016 - Impact protection plates at sides of columns



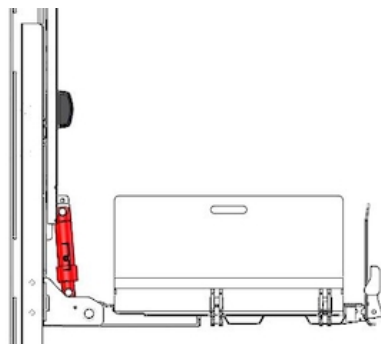
OVP062 - VO.K1 cylinder beam adapted for rear doors



OVP200.ST - Steel bumper with tube 50 x 100mm for DH-V*



OVP202.01 - Diagonal bumper support for DH-VOxxK1



OVP004 - 1 tilt cylinder, no adjustable tilt VOC-VB4

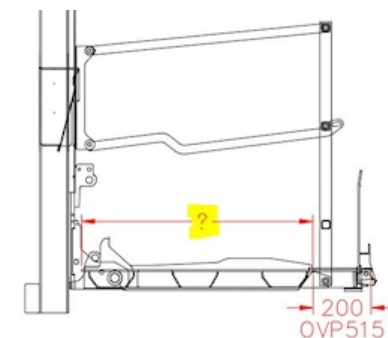
OVP004.2 - 2 tilt cylinders, no adjustable tilt



OVP011.V - 2 vertical tilt cylinders VO.15/20



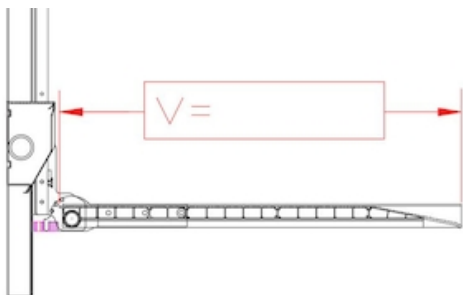
OVP002.0 - Aluminium platform on DH-V* lift



OVP012.S - Extension of the steel platform per 100 mm

OVP001.1 - Steel platform on DH-V* lift

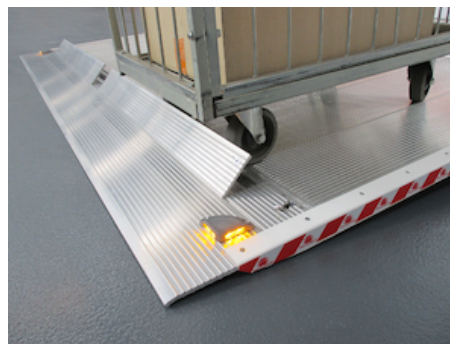
OVP003.1 - Steel platform frame + alu profiles [VO15K1]



OVP012.A - Extension of aluminium platform per 100 mm



OAP100.M - 2-piece symm. roll-stops in the platform point - MANUAL



OAP100.A - 2-piece symm. roll-stops in the platform point - AUTOMATIC



OVP120.S.R - 2 hinged ramps in steel at rear edge of platform



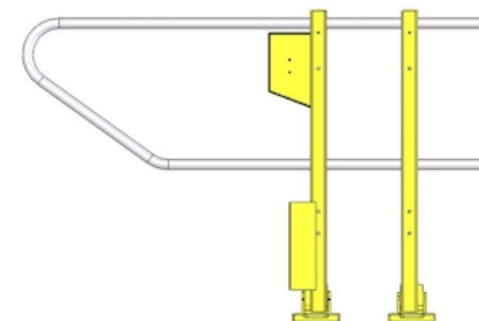
OVP120.S.S - 2 hinged ramps in steel at L+R side edges of platform



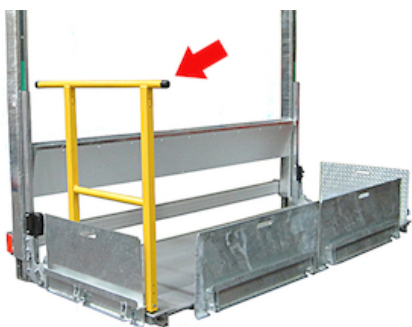
OVP120.Y - OVP120 in powder coat yellow



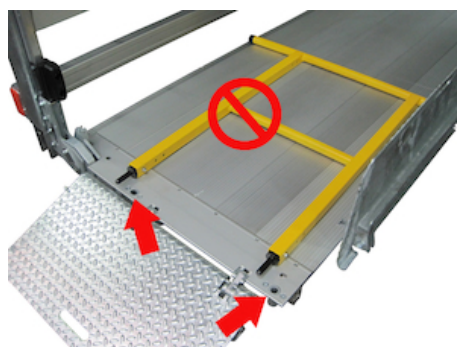
OVP206 - Horizontally foldable platform



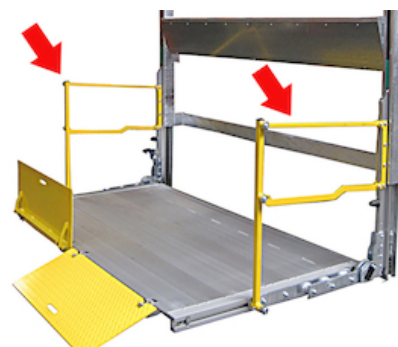
OVP301 - 2 hinged side safety rails L+R - STD



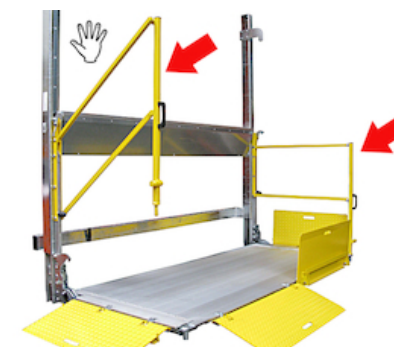
OVP302 - Set of 2 drop-in safety rails L+R



OVP303 - 4 holes in the platform for drop-in safety rails OVP302

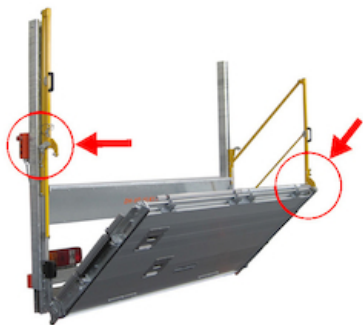


OVP332 - Automatically folding safety rails L+R for DHVO...K1 / VB...E1

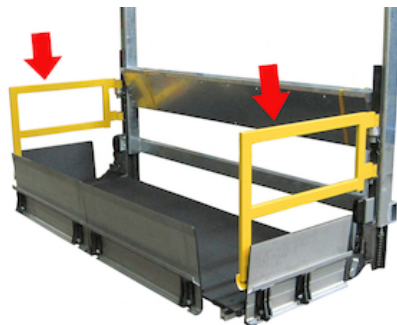


OVP334 - Plug-in foldable safety rails L+R for DH-VO...K1 / VB...E1





OVP336 - Dual Mode foldable safety rails L+R for DH-VO& K1 / VB& E1



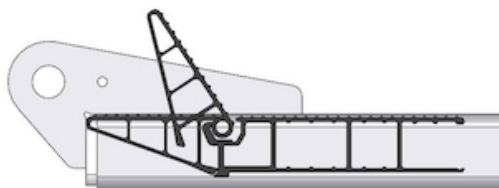
OVP350 - Pivotable safety rails on lift runners L+R for DHVO...K1 / VB...E1



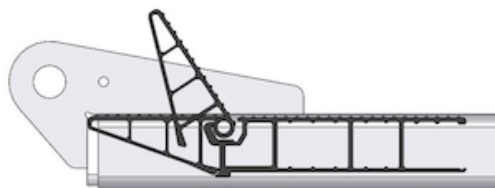
OVP351.01 - Safety rails on lift runners T1 - 3 sides



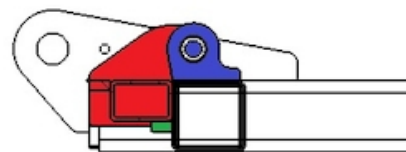
OVP351.03 - Safety rails on lift runners T3 - 3 sides



OVP401.1 - Alu toe-guard flap + safety switch (K1-K9)



OVP402.1 - Alu toe-guard flap without switch (K1-K9)



OVP403.1 - Steel toe-guard without switch (K1-K9)



OAT020 - Reflecting platform flags type TÜV



OAT023 - Reflecting platform flags type Export Red



OVT110.1 - Aluminium platform of the DH-VO& K1 / VB& E1 in anodised finish



OVT121.P - Galvanised platform VO (on demand)



OVT121.F - Lift frame of the DH-VO& K1 / VB& E1 in galvanised finish





OVU013.1 - Execution VO...K9 (T1) above floor level



OVU015.A - K2 execution on DH-VO.xx.K1 (narrow lift)



OVU015.B - K2 execution on DH-VO.xx.K1 (extra lifting height)



OVU019 - Platform supported by chains

