

Column lift DH-VX.25.D2

1500 - 2500 Kg



DHOLLANDIA



Multi-deck column lift with vertical lift cylinder

The DH-VX.25 is specially designed to load and unload vehicles with multiple or moving loading floors. This column lift is equipped with a flat platform, offering a smooth and level ride between the various loading floors and the ground.

The DH-VX.25 is equipped with **one lift cylinder, mounted vertically** in the right side lift column. The lift runner at the opposite side is moved up and down by means of a set of steel cables crossing at roof level. Since the cross member at roof level is merely 35 mm high, this lift is ideal for vehicles where the free passage height through the body aperture is crucial, such as **low-floor semi-trailers with independent axle suspension** .

Whereas the DH-VH.30 only travels between the lower and upper deck, the DH-VX.25 can go down below the lower deck and travel **from the ground to the upper deck** .

The DH-VX.25 is often used as **internal lift** or moving deck: platforms without tilt cylinders, travelling up and down internally between the lower and upper deck. Internal lifts are often combined with a second, external lift (a multi-deck lift, a slider lift, or a hydraulic ramp).

Main features:

- Basic model, robust & heavy duty, multi-functional
- Single lift cylinder mounted in the right side column, plus a set of cables crossing at roof level for the actuation of the left side lift runner
- Platform = steel frame + aluminium infill profiles
- Lifting height to approx. 1400 mm under the roof level
- Exterior lift: shrouds and platform seals available on the outside of the columns



PLATFORM

- Platform construction: steel frame with aluminium infill profiles
- Fixed leading edge at outboard platform edge [hinged ramps available as an option]
- Inboard platform edge is equipped with toe-guard profile and safety switch

FUNCTIONAL & MECHANICAL CHARACTERISTICS

- VX lift system: lift driven by 1 lift cylinder mounted vertically in the right side column, plus steel cable(s) crossing at roof level for the actuation of the left side lift runner
- Double steel cable system: 2 main lift cables + 2 safety cables
- Electrical steel cable rupture detection plus emergency operation
- Lifting height up to approx. 1400 mm under roof level (depending on vehicle dimensions)
- Lifting height in function of the vehicle height
- Flat platform, level ride
- Platform tilt adjustable at any position from the exterior controls

HYDRAULICAL CHARACTERISTICS

- 1 single acting lift cylinder
- Hydraulic closure. 2 single acting tilt cylinders, positioned horizontally [OVH001.0]
- Robust pump unit with air cooled 24V DC motor, or standard 12V motor, supplied loose for mounting on the vehicle chassis. (12V operation is strongly advised against)
- Electrical safety valves on all cylinders
- Manual emergency operation on all electrovalves

ELECTRICAL CHARACTERISTICS

- Exterior control box with main battery disconnect switch and removable key [OAE030.BT.0]
- Electrical controls without sensitive electronic components
- Safe exterior controls with compulsory 2-hand operation

FITTING

- Robust steel columns and steel cylinder beam, for welded mounting to the vehicle chassis and the rear frame of the body
- CE-conforming toe-guard to be built by the body builder at the outboard edge of the loading floor(s). Advice available at DHOLLANDIA

FINISH & MAINTENANCE

- Low-maintenance bearings in all articulation points
- Treatment: high-quality zinc primer + polyester powder coating
- Alu platform or platform sections in natural finish
- Not included in basic configuration: loading floor extension; toe-guard protection at the rear end of the loading floor(s); roof construction; and guard rails
- Guard rails are mandatory above 2000 mm lifting height (CE), and strongly recommended for lower lifting heights. See electrical options for platform controls integrated in one of the guard rails.

Disclaimer: data and images of lifts and options are indicative, and may vary in function of the lift execution and vehicle details. Ask confirmation from DHOLLANDIA.





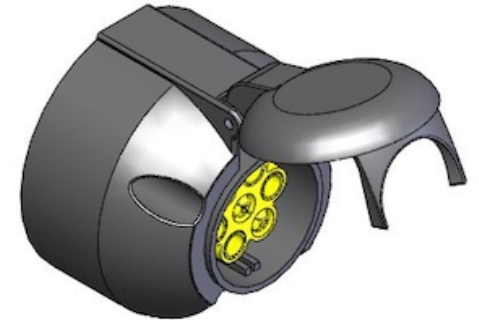
OAE030.BT.0 - Exterior joystick control box + main battery isolator switch (+ turn switch)



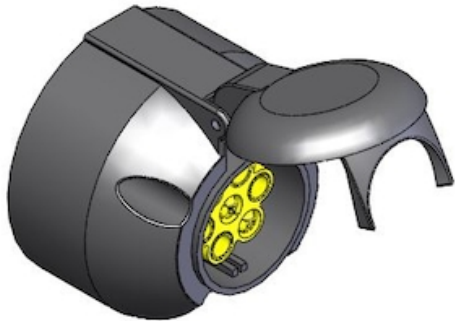
OAE001 - 2-button wander lead with spiral cable



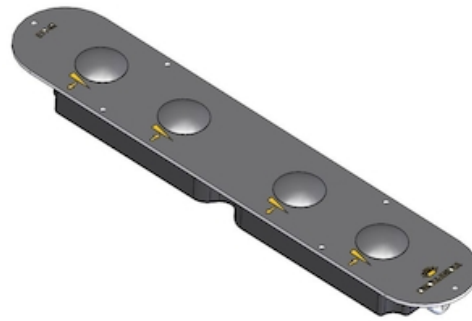
OVE001 - 2-button wander lead + long spiral cable



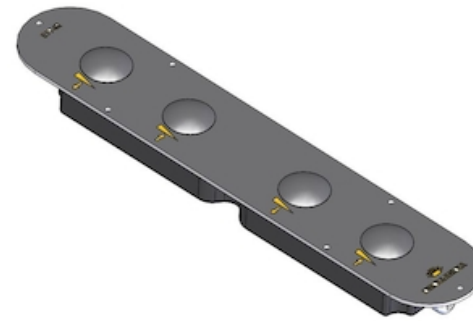
OVE003.L - Female plug mounted on platform LEFT side



OVE003.R - Female plug mounted on platform RIGHT side



OVE006.L - 4-button foot controls mounted LEFT side



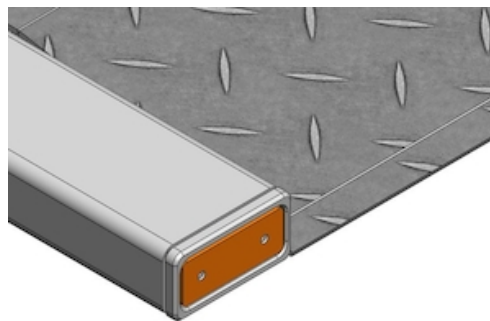
OVE006.R - 4-button foot controls mounted RIGHT side



OAE031.Z.0 - 3+1 button exterior control box without main battery isolator switch



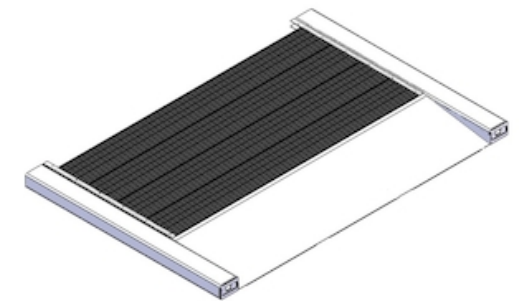
OAE038.A - Main battery isolator switch with demountable key



OVE201.A - Platform lights IN the platform tubes

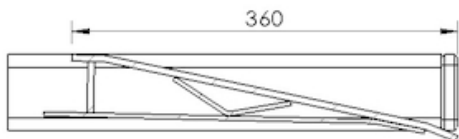


OVE201.B - Platform lights ON TOP of the platform surface

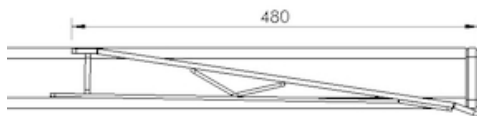


OVP003 - Platform DH-V* manufactured from steel frame + aluminium profiles

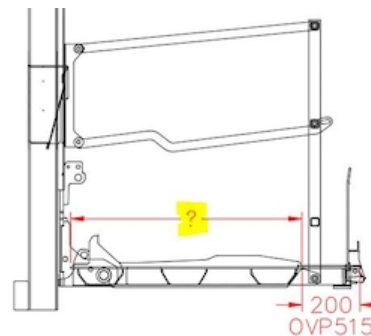




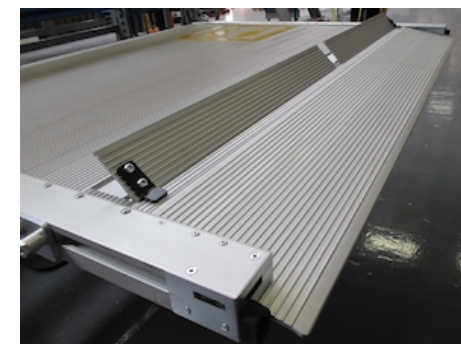
OVP010.360 - Short fixed leading edge 360 mm



OVP010.500 - Fixed leading edge 500 mm



OVP012.S - Extension of the steel platform per 100 mm



OVP100.M - 2 manual rollstops in profile before point

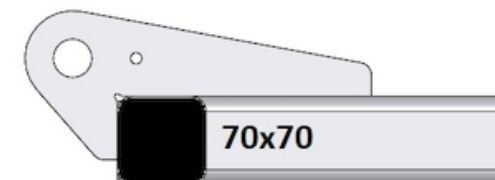


OVP100.A - 2 automatic rollstops in profile before point

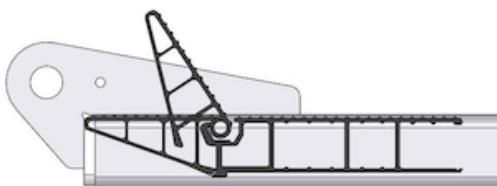


OVP120.S.R - 2 hinged ramps in steel at rear edge of platform

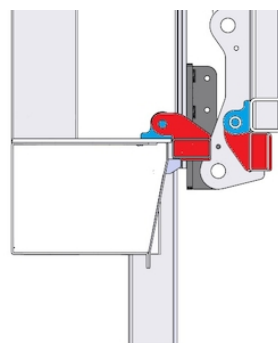
OVP120.S.S - 2 hinged ramps in steel at L+R side edges of platform



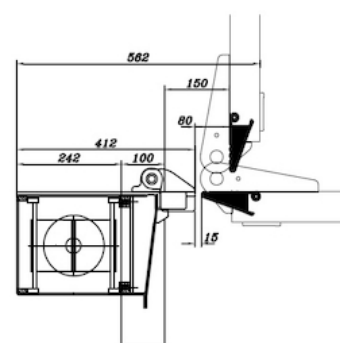
OVP400 - Platform without toe-guard flap



OVP401 - Alu toe-guard flap + safety switch (DD)

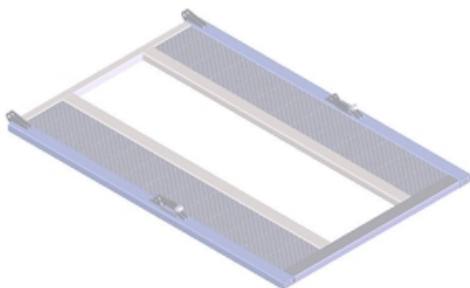


OVP404.S - Double toe-guard flaps steel-steel on VO-B10

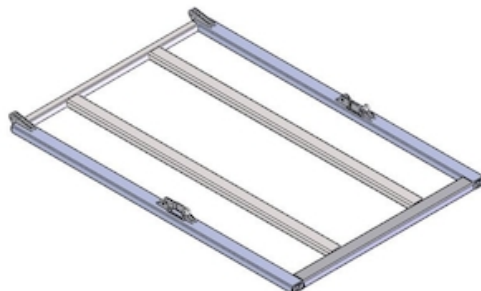


OVP404.A - Double toe-guard flaps steel-alu on VO-B10

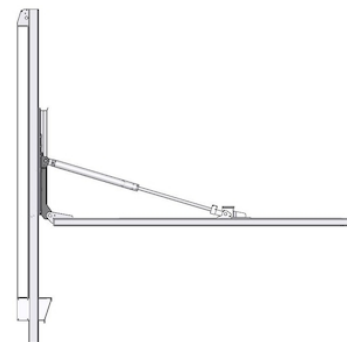
OVP405 - Extra toe-guard flap for 2nd vehicle floor



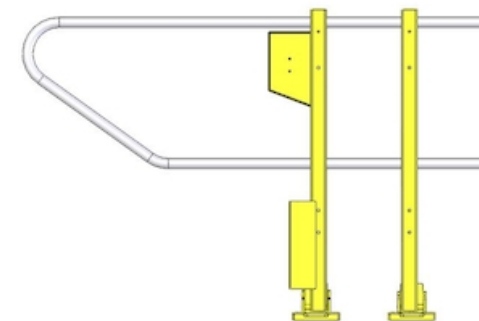
OVP502 - Preparation for middle door with aluminium side profiles



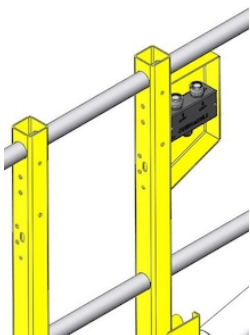
OVP503 - Preparation for middle door without aluminium side profiles



OVP300 - Platform supplied without safety rails



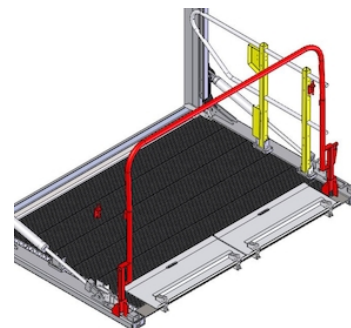
OVP301 - 2 hinged side safety rails L+R - STD



OVE150.L - Toggle-switch up / down control on LEFT-side guard rail



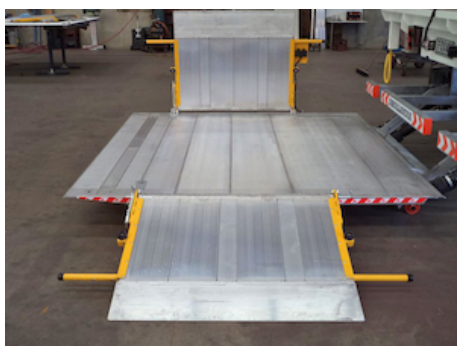
OVE150.R - Toggle-switch up / down control on RIGHT-side guard rail



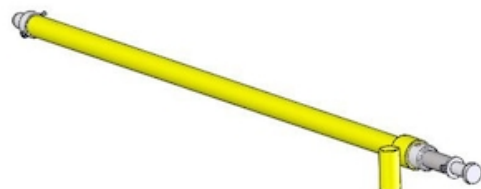
OVP304 - 3-side safety rails for trolleys



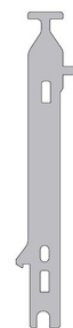
OVP305 - 2 combined side rails / side ramps on the platform L+R



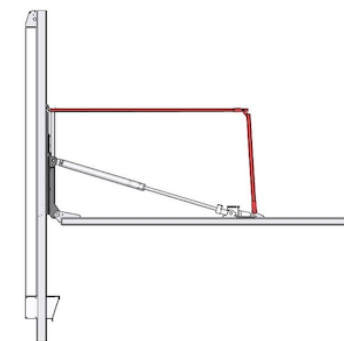
OVP305.B - 2 heavy-duty combined side rails / side ramps on the platform L+R



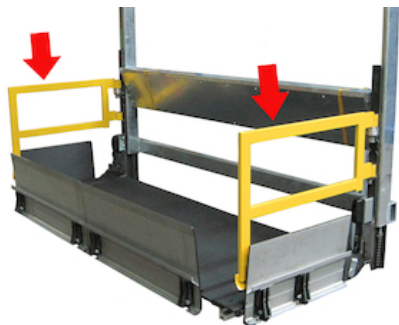
OVP307 - Telescopic fall protection rail between 2 side rails



OVP309 - Lock for safety rail on platform surface



OVP330 - Automatically folding safety rails VB-VO-VX



OVP350 - Pivotable safety rails on lift runners L+R for DHVO...K1 / VB...E1

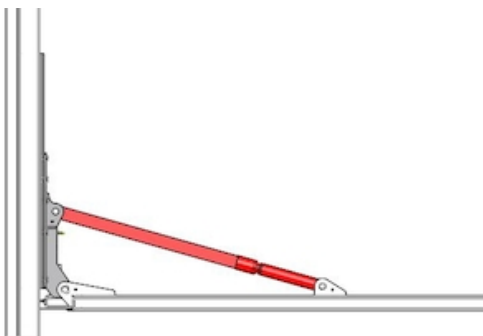


OVP351.01 - Safety rails on lift runners T1 - 3 sides



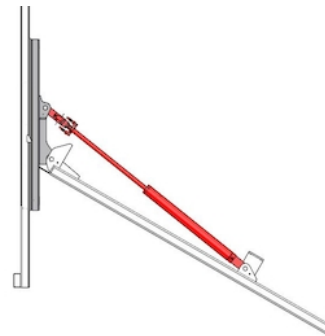
OVH001.0 - Tilt cylinders mounted horizontally (std.)

OVH002.1 - Tilt cylinders mounted vertically (option)



OVH005 - Fixed platform without tilt cylinders

OVH006.10 - Downward platform inclination to -10°



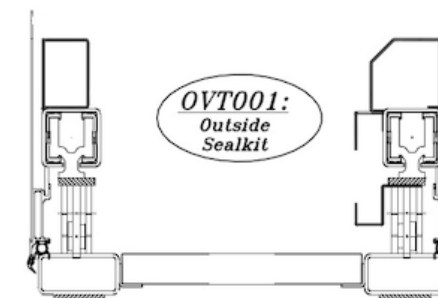
OVH006 - Inclination of platform to the ground (-45°)

OVH007 - Reinforced tilt cylinders VO/VB >2.5T

OVH110 - Double acting flow valve V189 open/close

OVH112 - 2 closing speeds (+ extra push button)

OVT100 - Standard paint finish on DH-V* (2K epoxy + powder coating)



OVT001 - Shrouds + platform seals mounted at the outside of the lift columns



OVT110 - Aluminium profiles of the DH-V* platform in anodised finish

OVP504 - Aluminium platform profiles welded on the outside

OVP505 - Aluminium platform profiles welded on both sides



OAT020 - Reflecting platform flags type TÜV



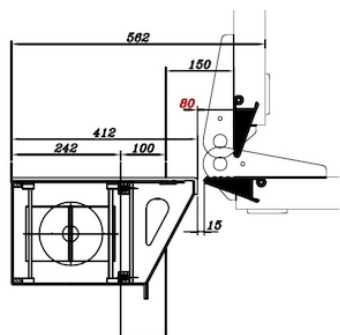
OAT023 - Reflecting platform flags type Export Red

OVF003.2 - Bolt-on fitting VB-VO-VX

OVF001 - Platform mounted at ...mm above ground level



OVF002 - Travel lock pins under the lift runners



OVF030.80 - Free opening of 80 mm for side rails (VO3)



OVF056 - Platform closing hooks at sides / down below

