

Slider lift DH-SM.20

1500 - 2000 Kg



DHOLLANDIA





Mounting on truck chassis



Mounting on trailer and semi-trailer chassis



Mounting on chassisless North-American semi-trailer or trailer

Medium-duty 4-cylinder slider lift with single fold platform

The DH-SM(R).20 is the **top seller slider lift in the medium capacity range** . This versatile lift is able to handle various types of cargo, including pallets, up to max. 2000 kg.

In its travel position, the DH-SM.20 is **safely stored underneath the chassis of the vehicle** . It is ideal for operations needing frequent fork lift loading or access to loading docks, and all applications requiring quick and free access to the cargo space.

There are 2 executions: the DH-SM.20 designed for **truck chassis**, and the DH-SMR.20 designed for **quick-fitting on trailer and semitrailer chassis** .

- + Safely stored under the vehicle chassis. No damage when reversing into loading docks, or when loading or unloading with a fork lift. Free access to the cargo space.
- + Wedged platform. Level ride with automatic tilt at ground level. Adjustable platform orientation.
- + Electrical controls without sensitive electronic components
- + Lift frame in hot-dip zinc plated or "galvanised" finish. Best possible protection against corrosion [OAT104].





Pump unit 12V or 24V DC, accessible on 5 sides for easy maintenance



Hydraulic retraction by means of a hydromotor + gearwheel system [OAH022]



Electrical controls without sensitive electronic components

PLATFORM

- Steel base section with aluminium point, or full aluminium platform [option OAP601]
- Synthetic rollers for the contact between the platform and the ground
- (Un)folding of the platform point reinforced by torsion springs [OAP613]

FUNCTIONAL & MECHANICAL CHARACTERISTICS

- Conical / wedge platform. Level ride with automatic tilt at ground level
- Platform tilt adjustable at any position from the exterior controls

HYDRAULICAL CHARACTERISTICS

- 2 lift and 2 tilt cylinders for maximum platform stability
- Electrical safety valves on all cylinders
- Manual emergency operation on all electrovalves
- Cylinder piston rods in hard-chromed stainless steel
- Cylinders equipped with rubber gaitors and lubrication
- Pump unit 12V or 24V DC, accessible on 5 sides for easy maintenance
- Hydraulic retraction by means of a hydromotor + gearwheel system [OAH022]

ELECTRICAL CHARACTERISTICS

- Exterior control box with main battery isolator switch and removable key [OAE030.BT.0]
- Electrical controls without sensitive electronic components
- Safe exterior controls with compulsory 2-hand operation
- Electric motor with thermal cut-out fuse

FITTING

- Truck: aluminium sliding tubes with bolt-on mounting brackets for quick fitting to truck chassis
- (Semi) Trailer: aluminium sliding tubes with adjustable mounting clamps for quick fitting on (semi-) trailer chassis

FINISH & MAINTENANCE

- Low-maintenance bearings in all articulation points, plus grease nipples
- Lift frame in hot-dip zinc plated or "galvanised" finish. Best possible protection against corrosion [OAT104].
- Steel base section standard in hot-dip zinc plated finish [OAT127]
- Alu platform or platform sections in natural finish

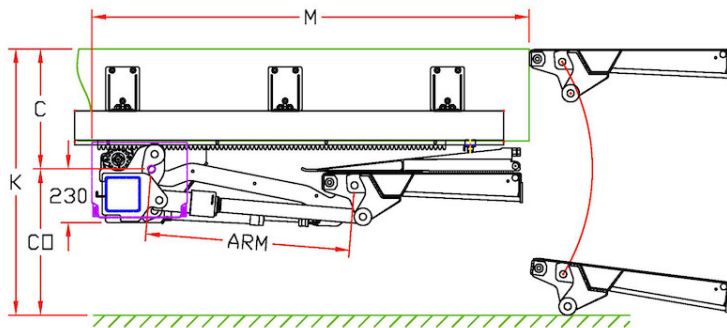
Disclaimer: data and images of lifts and options are indicative, and may vary in function of the lift execution and vehicle details. Ask confirmation from DHOLLANDIA.



TECHNICAL CHARACTERISTICS

DH-SM.20

Lift frame	150 x 150 mm
Cylinders	2 lift cylinders + 2 tilt cylinders
Retraction in/out	Hydromotor + gear wheel system
Type of ride	Wedged platform. Level ride + automatic tilt at ground level
Platform material	Steel / Alu or Alu / Alu
Standard platform depths	- 1500 - 1700 - 1800 mm - Longer platforms on request [OAP602]
Standard platform widths	- 2100 - 2300 - 2400 mm - Other widths on request [OAP603]
Lift arm lengths	760 - 820 - 880 - 940 - 1000 - 1100 mm
Lift arm widths	800 (SMR only) - 1300 - 1550 mm
Standard control unit	OAE030.BT
Standard finish of the lift frame	Hot-dip zinc plated finish [OAT104]

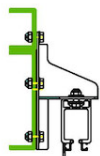


MOUNTING DIMENSIONS

DH-SM.20

larm	760	820	880	940	1000	1100	
K max.	1215	1330	1410	1500	1585	1725	
C max.	625	680	715	770	815	895	
CO max.	590	650	695	730	770	830	
M	1500 mm platform	1640	1700	1760	1820	1880	1980
M	1700 mm platform	1740	1800	1860	1920	1980	2080
M	+ option OAP610	-100	-100	-100	-100	-100	-100

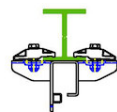
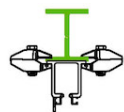
TRUCK
□AM030



TRAILER / SEMI-TRAILER

□AM032.A
STANDARD

□AM032.S
OPTION





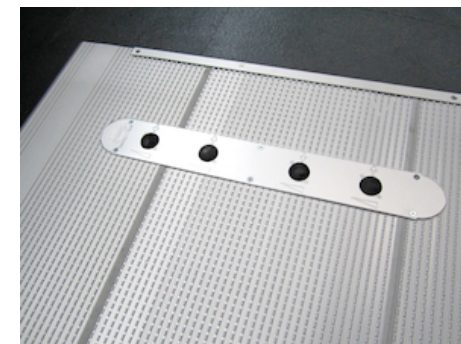
OAE001 - 2-button wander lead with spiral cable



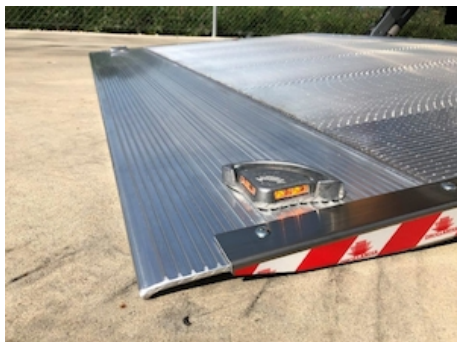
OAE030.BT.0 - Exterior joystick control box + main battery isolator switch (+ turn switch)



OAE041.BP.0 - Arctic push-button control box + main battery isolator switch (+ push button)



OAE060 - 4-button foot controls in the platform



OAE200.B - Flashing platform lights + protection 12/24V



OAE503.1 - Cabin switch (single use)



OAE400.24 - Battery box 24V empty + cover



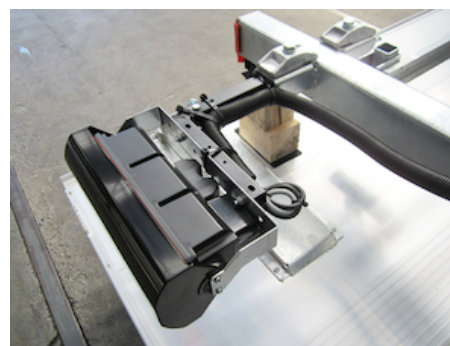
OAE406.24.L - 24V battery box on slide tube low



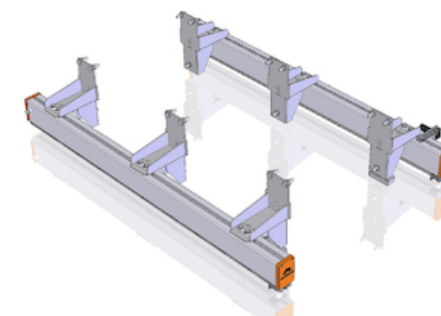
OAE406.24.TL - 24V battery box on slide tubes - telescopic



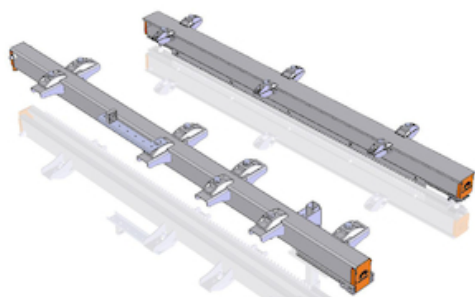
OAM021 - Chassis extension for DH-SM



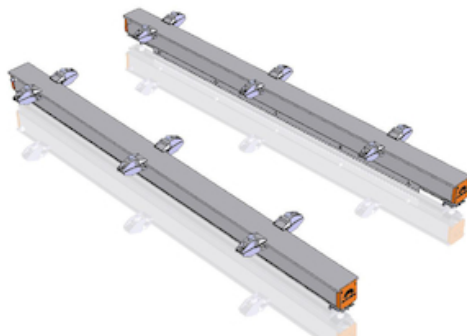
OAM027 - Bracket for mounting of control box on slide tube



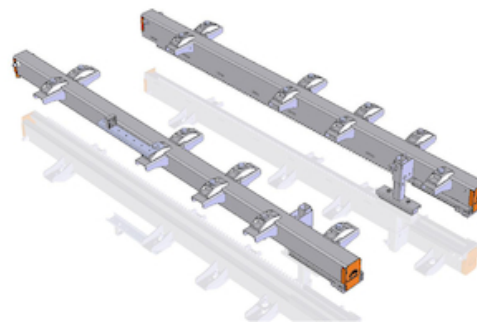
OAM030 - Slide tubes for SIDE mounting



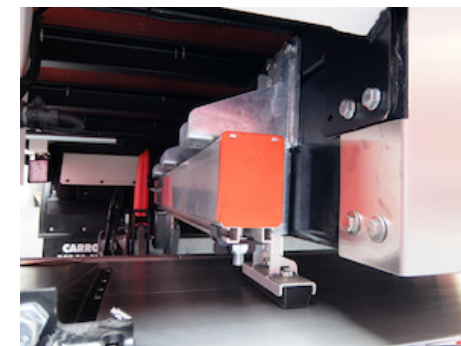
OAM031 - Slide tubes for UNDER mounting with clamps



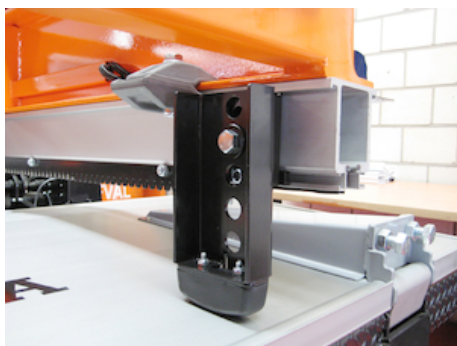
OAM032.A - Slide tubes DH-S* in ALUMINIUM



OAM032.S - Slide tubes DH-S* in STEEL



OAM033.A - Low platform stop for side mounting



OAM037.LE - Hinged buffer ...mm for trailer sliding tubes



OAM100 - Premounting of DH-S* on transport rack OAA501.01



OAP100.M - 2-piece symm. roll-stops in the platform point - MANUAL



OAP100.A - 2-piece symm. roll-stops in the platform point - AUTOMATIC



OAP203.LR - 2 hinged safety rails on L+R side of a foldable platform



OAP204.LR - 2 hinged safety rails with rotating foot on L+R side of platform



OAP023 - 1 standard size side ramp (type B) for OAP022 / 024

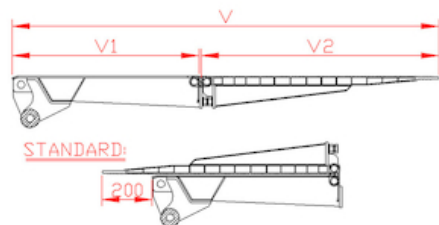


OAP601 - Fixed part of folding platform in ALU instead of steel





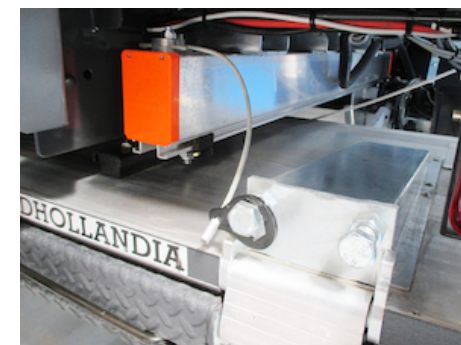
OAP602 - Extension of the slider lift platform per 10 cm



OAP604 - Non-standard split between platform base section and point



OAP610 - Platformhands 100 mm under the platform on DH-S* platform



OAP620.B - Platformlock DH-S* with steel cable



OAT020 - Reflecting platform flags type TÜV



OAT023 - Reflecting platform flags type Export Red



OAT136 - Anodisation alu base section + point DH-S and DH-R



OAT137 - Anodisation of foldable alu point



OAU100 - Control box on L side (R steering wheel for UK)

