

Slider lift DH-SO8.20

1500 - 2000 Kg



DHOLLANDIA



Double folded platform for containers & swap bodies

Like the other slider lifts from the DH-SO... range, the DH-SO8 is also equipped with a double folded platform, to **minimize the required installation space** behind the mud-guard or springer hangar. But this lift is mainly focused on commercial vehicles with **BDF - AWL swap bodies and containers**. Its platform consists of 3 sections: a sturdy fixed steel section, which also forms the bumper bar; and 2 light-weight aluminium folding sections.

The inboard edge of the steel platform section can be equipped with a **hinged bridge plate** [option OAP618.SO8], that allows for easier adjustment and alignment of the platform to varying types and dimensions of swap bodies. The long lift arms and geometry of the lift frame are specially designed to bridge the high package of a vehicle chassis, the subframe with twist-lock cross members, and the floor thickness of the swap body.



PLATFORM

- 3-sectional platform: a robust fixed steel section, which also forms the impact guard, plus 2 light-weight aluminium foldable sections
- Synthetic rollers for the contact between the platform and the ground
- The folding and unfolding of the platform are assisted by powerful torsion springs

FUNCTIONAL & MECHANICAL CHARACTERISTICS

- Conical / wedge platform. Level ride with automatic tilt at ground level
- Platform tilt adjustable at any position from the exterior controls

HYDRAULICAL CHARACTERISTICS

- 2 lift and 2 tilt cylinders for maximum platform stability
- Electrical safety valves on all cylinders
- Manual emergency operation on all electrovalves
- Cylinder piston rods in hard-chromed stainless steel
- Pump unit 12V or 24V DC, accessible on 5 sides for easy maintenance
- Hydraulic retraction by means of a hydromotor + gearwheel system [OAH022]

ELECTRICAL CHARACTERISTICS

- Exterior control box with main battery isolator switch and removable key [OAE030.BT.0]
- Electrical controls without sensitive electronic components
- Safe exterior controls with compulsory 2-hand operation
- Electric motor with thermal cut-out fuse

FITTING

- Truck: aluminium sliding tubes with bolt-on mounting brackets for quick fitting to truck chassis
- (Semi) Trailer: aluminium sliding tubes with adjustable mounting clamps for quick fitting on (semi-) trailer chassis
- Compact lift frame and a double-folded platform for mounting in a very short mounting space

FINISH & MAINTENANCE

- Low-maintenance bearings in all articulation points, plus grease nipples
- Lift frame in hot-dip zinc plated or "galvanised" finish. Best possible protection against corrosion [OAT104].
- Alu platform or platform sections in natural finish

Disclaimer: data and images of lifts and options are indicative, and may vary in function of the lift execution and vehicle details. Ask confirmation from DHOLLANDIA.

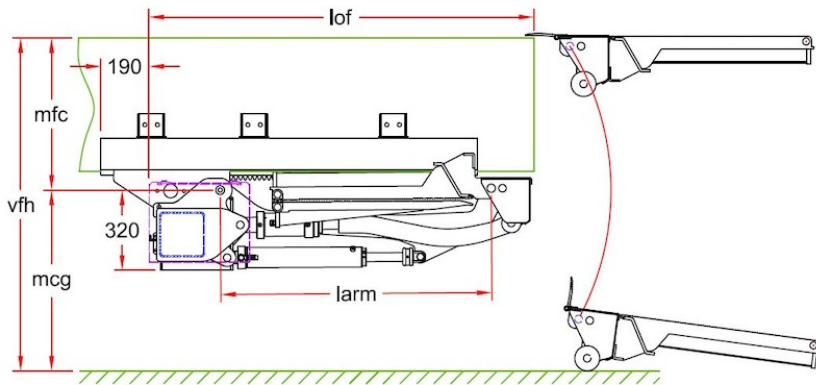


TECHNICAL CHARACTERISTICS
DH-S08.20

Lift frame	180 x 180 mm
Cylinders	2 lift cylinders + 2 tilt cylinders
Retraction in/out	Hydromotor + gear wheel system
Type of ride	Wedged platform. Level ride + automatic tilt at ground level
Platform material	Steel / Alu / Alu
Standard platform depths	1600 - 1800 mm
Standard platform widths	- 2300 mm - Other widths on request [OAP603]
Lift arm lengths	980 - 1080 mm
Lift arm widths	1300 mm
Standard control unit	OAE030.BT
Standard finish of the lift frame	Hot-dip zinc plated finish [OAT104]

MOUNTING DIMENSIONS
DH-S08.20

larm	S08.20.02 1080	S08.20.02 980	S08.20.03 1080
vfh max.	1685	1585	1640
mfc max.	880	780	910
mcg max.	805	805	730
lof	1520	1420	1520
pd max.	1800	1800	1800

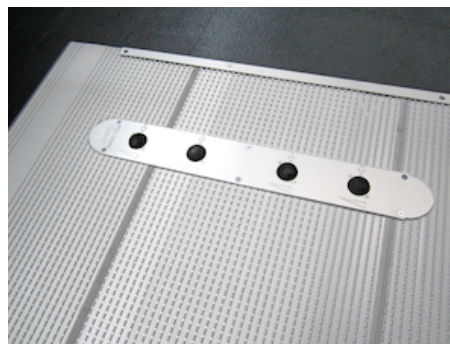




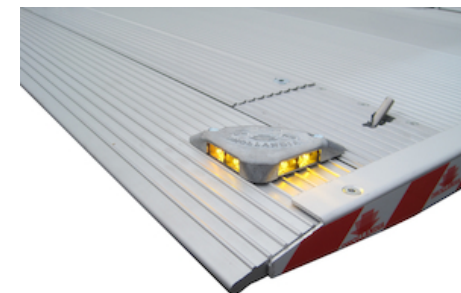
OAE001 - 2-button wander lead with spiral cable



OAE030.BT.0 - Exterior joystick control box + main battery isolator switch (+ turn switch)



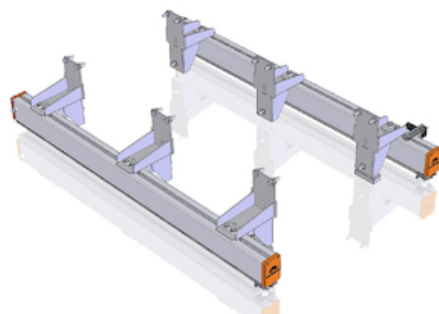
OAE060 - 4-button foot controls in the platform



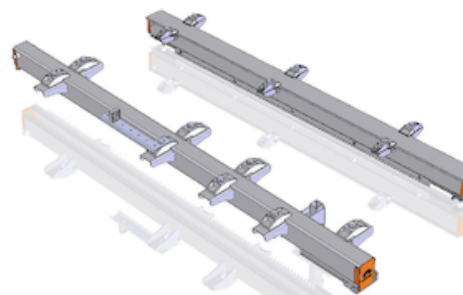
OAE200 - Flashing platform lights



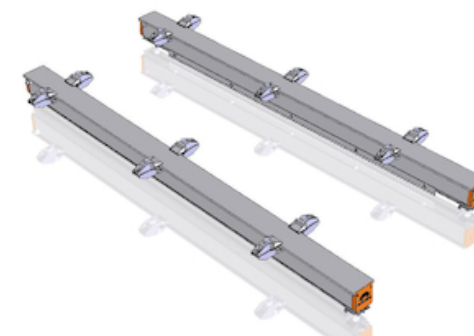
OAE503.1 - Cabin switch (single use)



OAM030 - Slide tubes for SIDE mounting



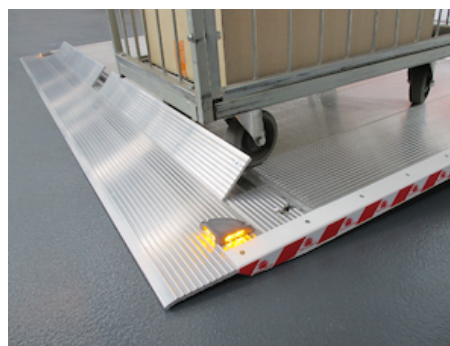
OAM031 - Slide tubes for UNDER mounting with clamps



OAM032.A - Slide tubes DH-S* in ALUMINIUM



OAM039 - Rubber buffer on underside of plarf. fixed part



OAP100.M - 2-piece symm. roll-stops in the platform point - MANUAL

OAP100.A - 2-piece symm. roll-stops in the platform point - AUTOMATIC



OAP601 - Fixed part of folding platform in ALU instead of steel





Non-standard

OAP603 - Non-standard width for foldable platform



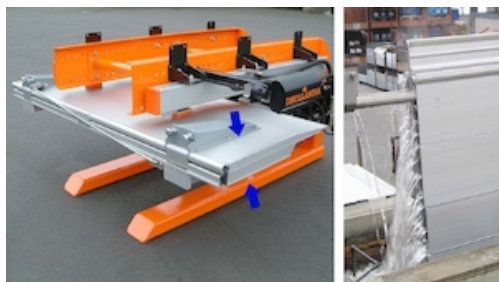
OAP618.S08 - Hinged bridge plate on inboard platform edge of DH-SM



OAT020 - Reflecting platform flags type TÜV



OAT023 - Reflecting platform flags type Export Red



OAT136 - Anodisation alu base section + point DH-S and DH-R



OAU100 - Control box on L side (R steering wheel for UK)